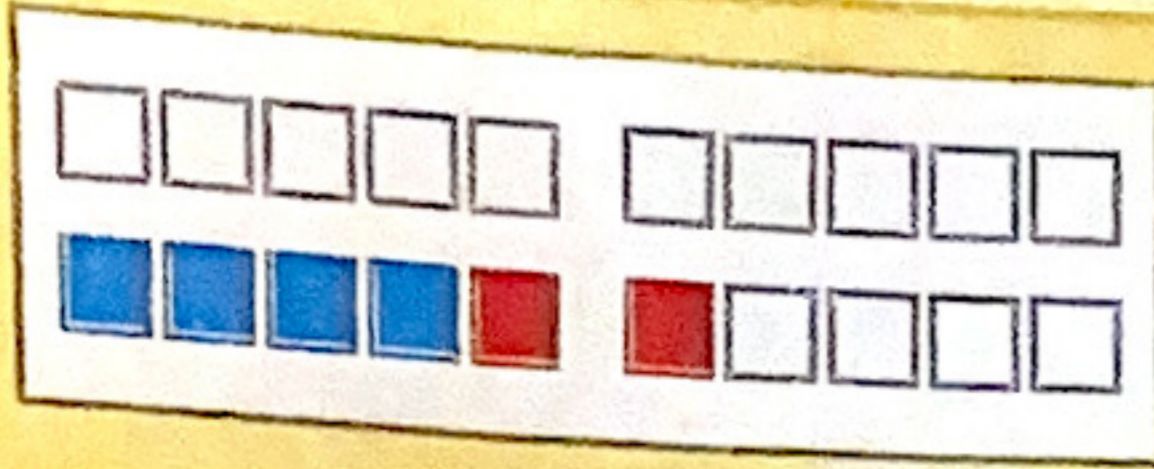
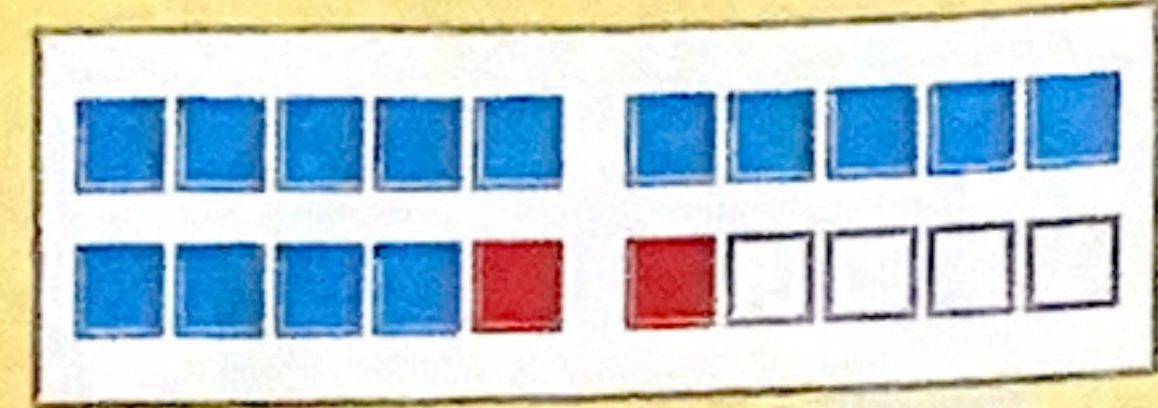


18.2.21



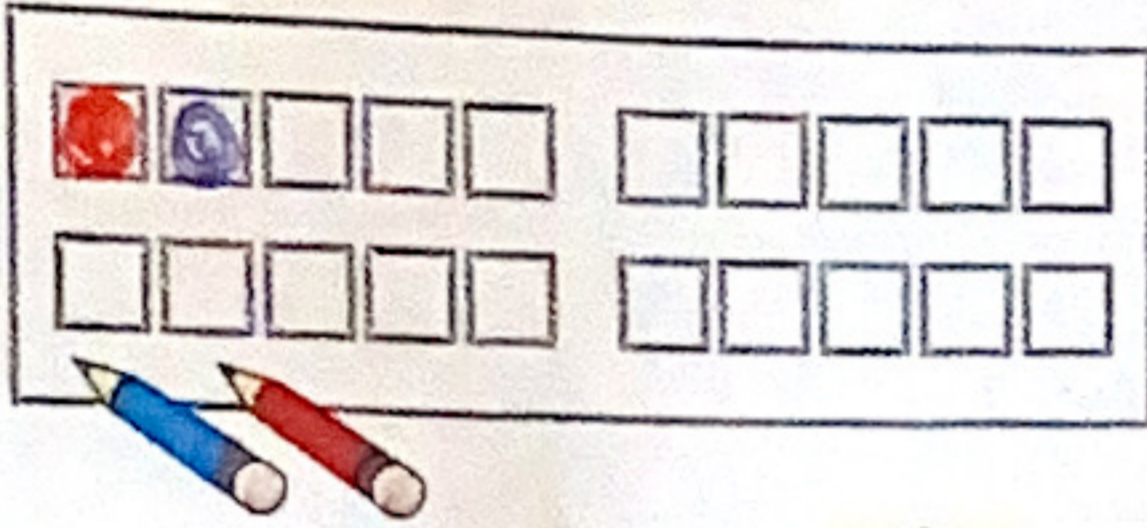
$4 + 2 = 6$



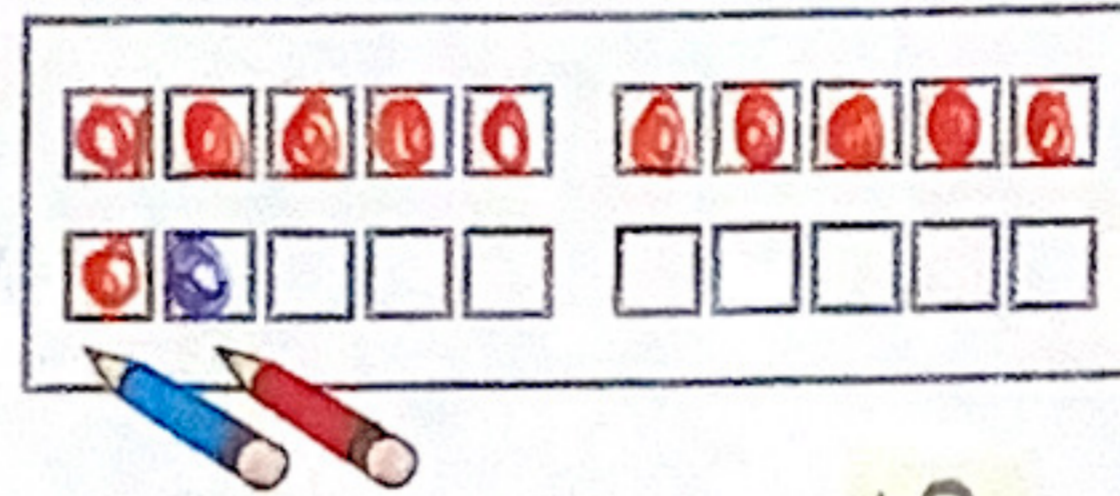
$14 + 2 = 16$

Male aus und rechne.

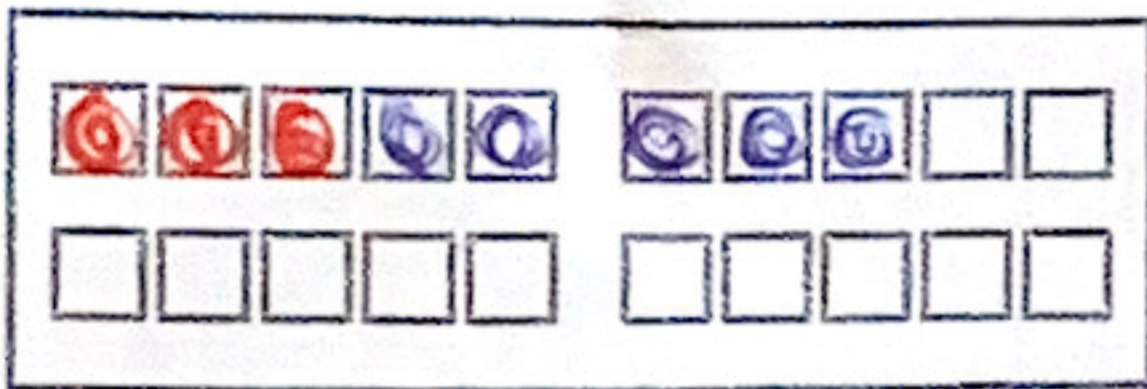
1



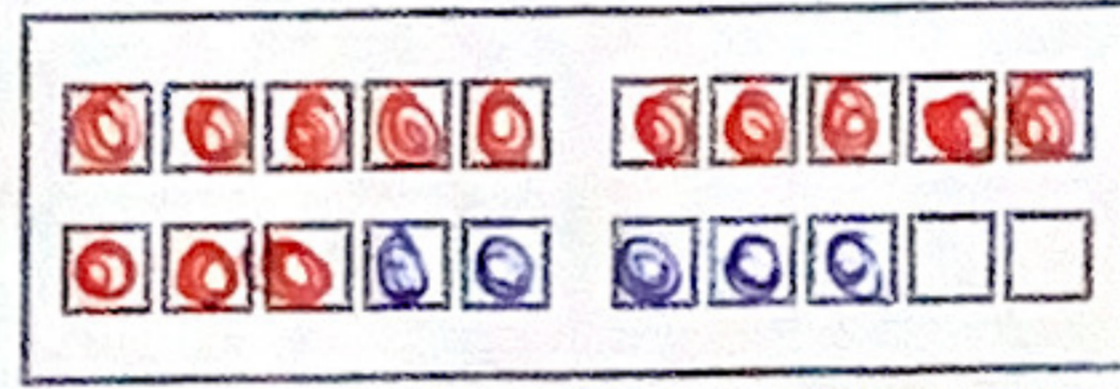
$1 + 1 = 2$



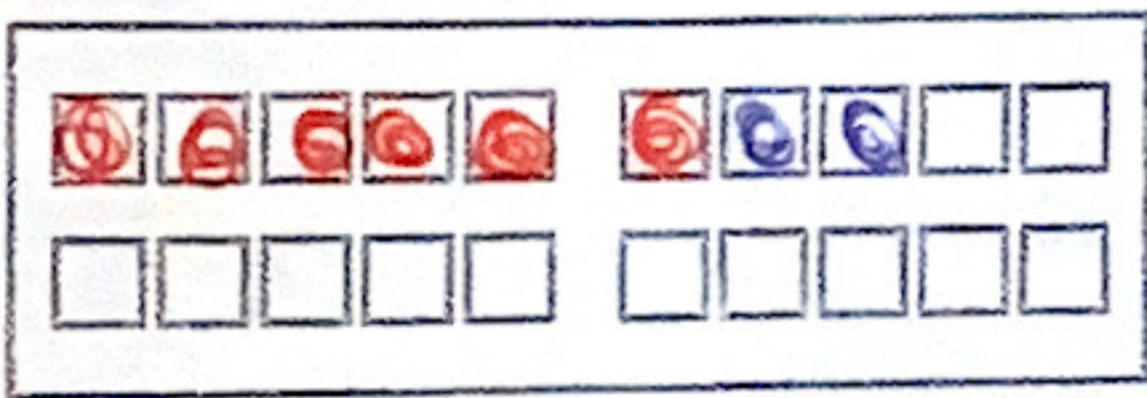
$11 + 1 = 12$



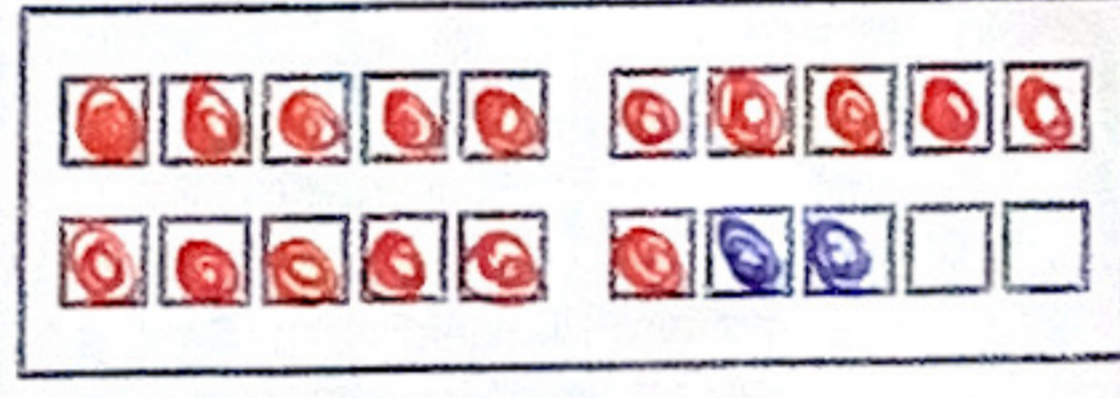
$3 + 5 = 8$



$13 + 5 = 18$



$6 + 2 = 8$



$16 + 2 = 18$

Schreibe eigene verwandte Plusaufgaben.



Rechne.

2

$5 + 4 = 9$

$2 + 6 = 8$

$3 + 3 = 6$

$15 + 4 = 19$

$12 + 6 = 18$

$13 + 3 = 16$

$8 + 1 = 9$

$7 + 1 = 8$

$1 + 5 = 6$

$18 + 1 = 19$

$17 + 1 = 18$

$11 + 5 = 16$

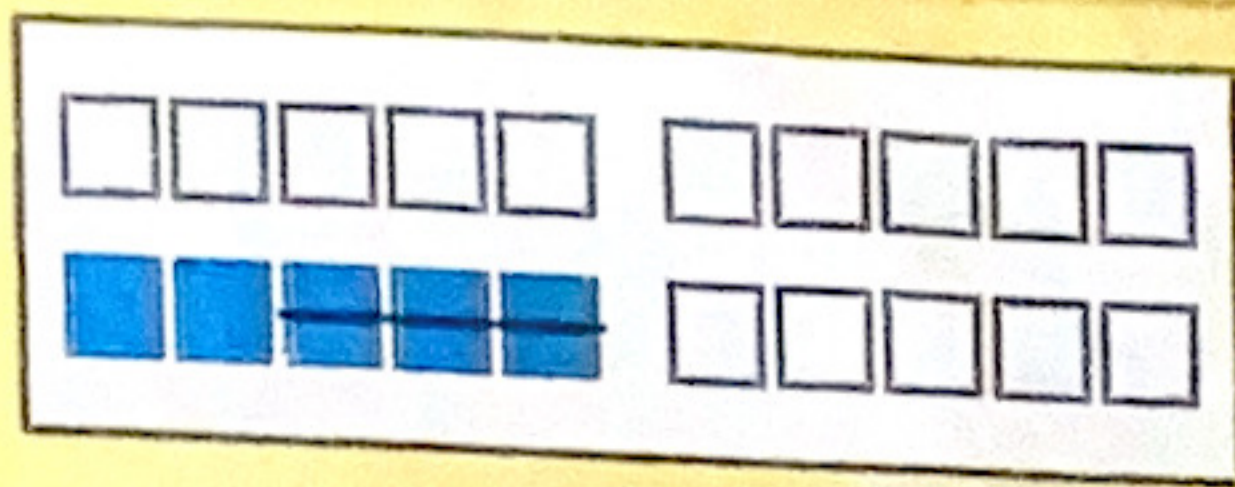
Rechne.

3

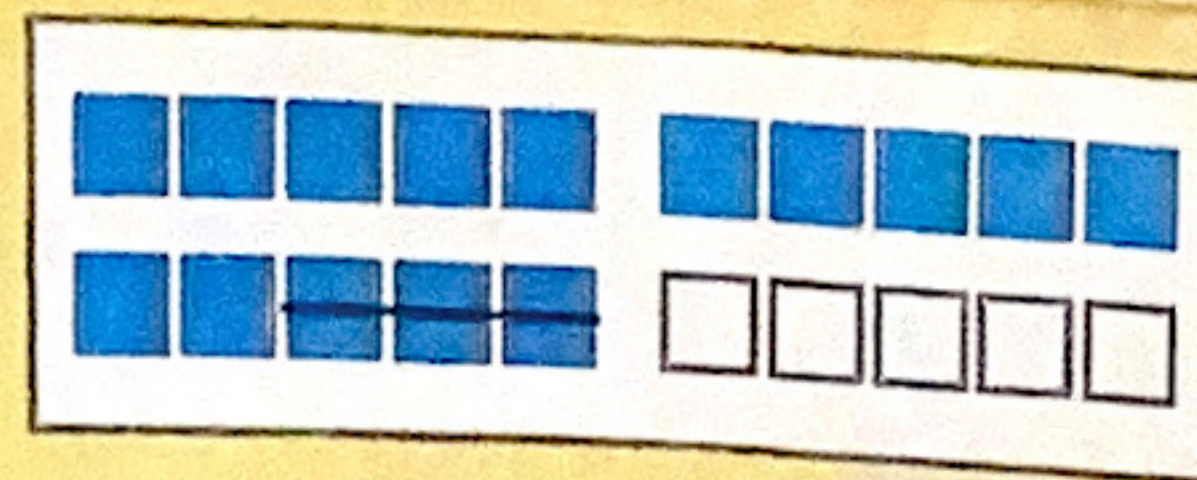
+	3	4	5	6
2	5	6	7	8
12	15	16	17	18

+	1	2	3	4
5	6	7	8	9
15	16	17	18	19

+	0	1	2	3
7	7	8	9	10
17	17	18	19	20



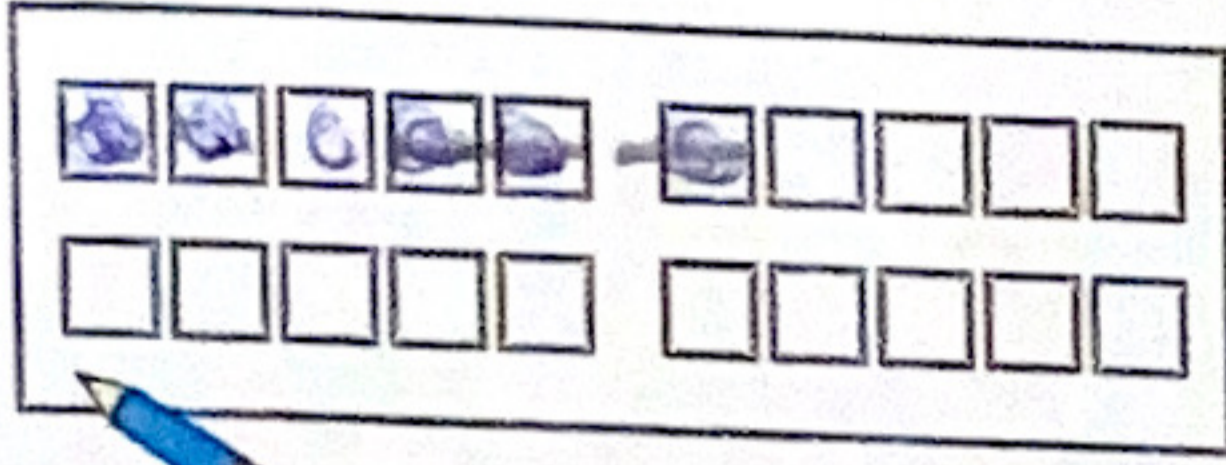
5 - 3 = 2



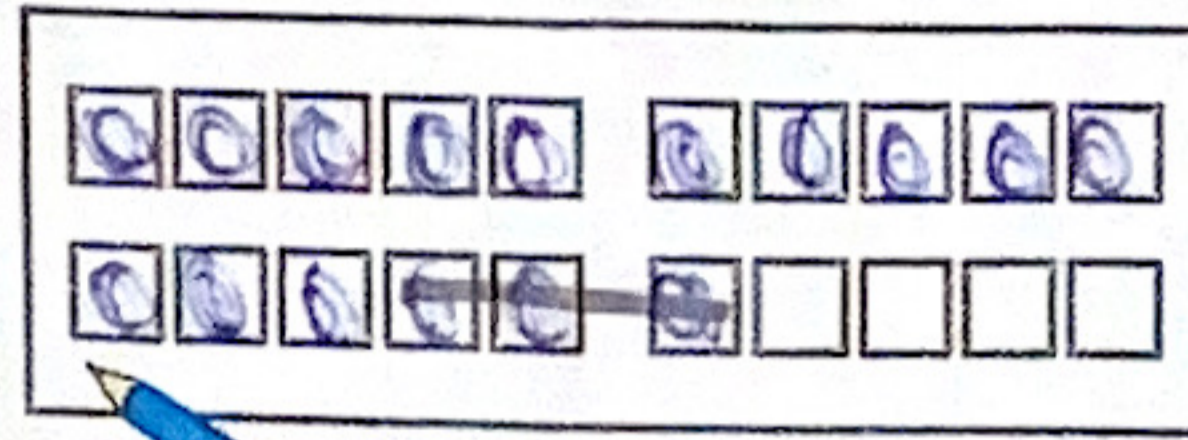
15 - 3 = 12

Male aus, streiche durch und rechne.

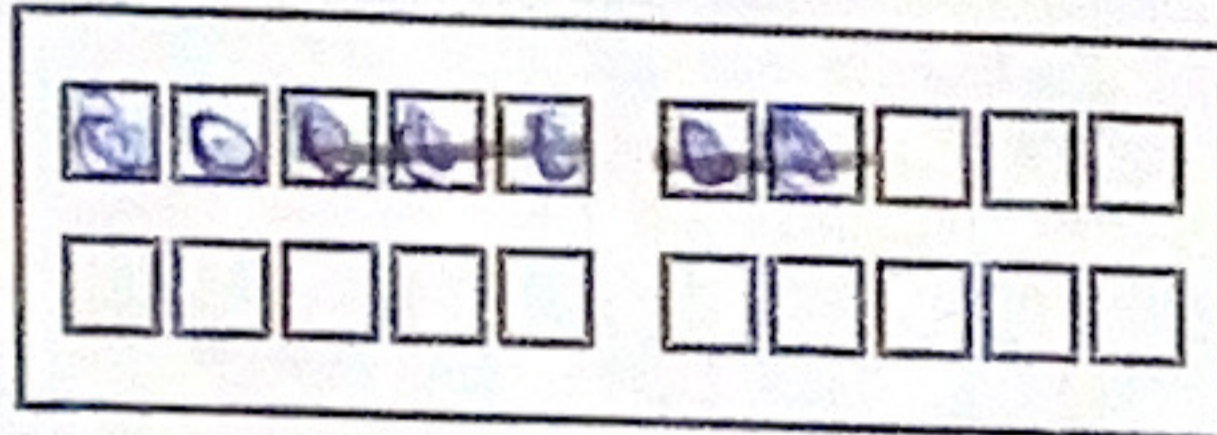
4



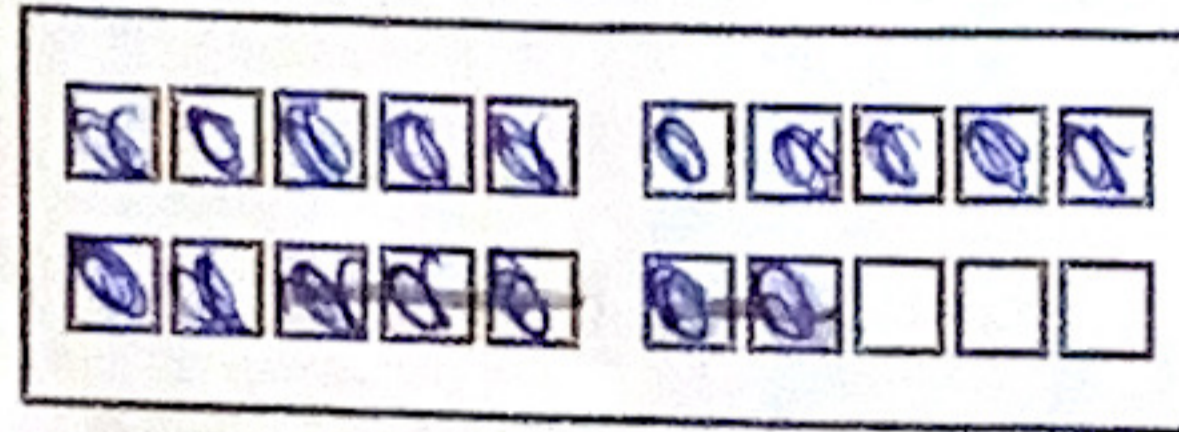
6 - 3 = 3



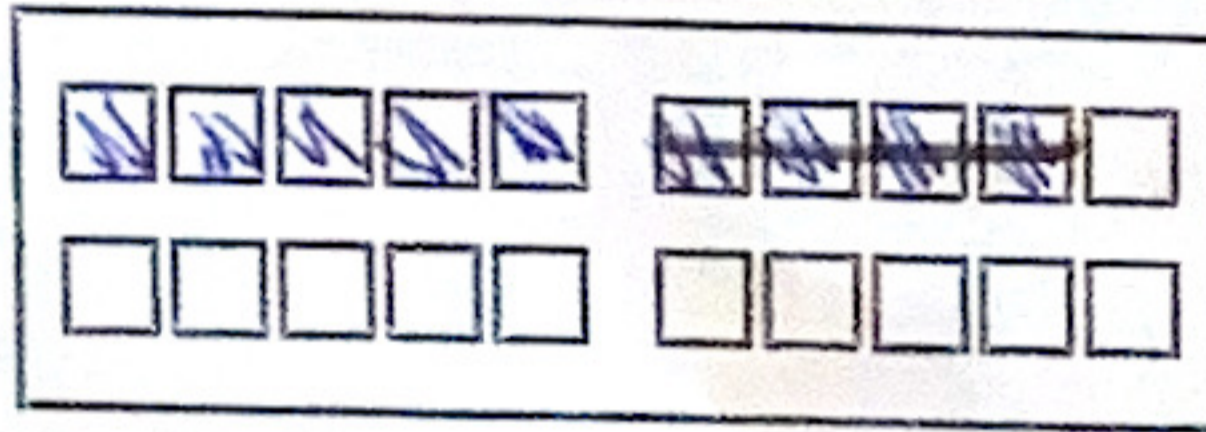
16 - 3 = 13



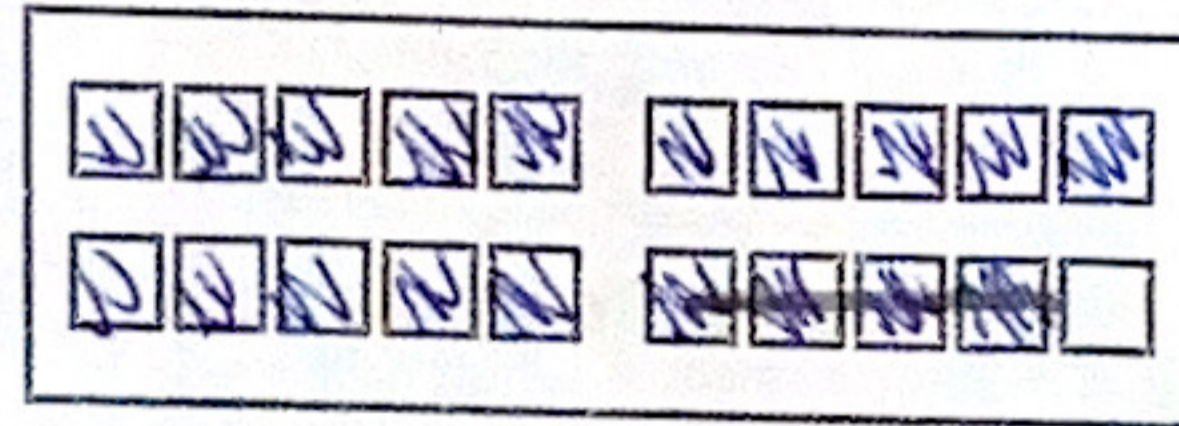
7 - 5 = 2



17 - 5 = 12



9 - 4 = 5



19 - 4 = 15


Schreibe eigene
verwandte
Minusaufgaben.



Rechne.

5

8 - 3 = 5

4 - 3 = 1

5 - 1 = 4

18 - 3 = 15

14 - 3 = 11

15 - 1 = 14

9 - 7 = 2

7 - 4 = 3

2 - 2 = 0

19 - 7 = 12

17 - 4 = 13

12 - 2 = 10

Rechne.

6

-	5	6	7	8
8	3	2	1	0
18	13	12	11	10

-	3	2	1	4
6	3	4	5	2
16	13	14	15	12

-	0	1	2	3
3	3	2	1	0
13	13	12	11	10

18.2.21

1

$$1 + 5 = \underline{6}$$

$$11 + 5 = \underline{16}$$

$$0 + 10 = \underline{10}$$

$$10 + 10 = \underline{20}$$

$$2 + 4 = \underline{6}$$

$$12 + 4 = \underline{16}$$

$$3 + 3 = \underline{6}$$

$$13 + 3 = \underline{16}$$

$$2 + 7 = \underline{9}$$

$$12 + 7 = \underline{19}$$

$$3 + 5 = \underline{8}$$

$$13 + 5 = \underline{18}$$

$$1 + 9 = \underline{10}$$

$$11 + 9 = \underline{20}$$

$$4 + 6 = \underline{10}$$

$$14 + 6 = \underline{20}$$

$$3 + 6 = \underline{9}$$

$$13 + 6 = \underline{19}$$

$$4 + 3 = \underline{7}$$

$$14 + 3 = \underline{17}$$

$$2 + 5 = \underline{7}$$

$$12 + 5 = \underline{17}$$

$$5 + 3 = \underline{8}$$

$$15 + 3 = \underline{18}$$

2 Verbinde erst die passenden Aufgaben. Rechne dann.

$$2 + 1 = \underline{3}$$

$$13 + 6 = \underline{19}$$

$$5 + 5 = \underline{10}$$

$$11 + 7 = \underline{18}$$

$$4 + 4 = \underline{8}$$

$$12 + 1 = \underline{13}$$

$$0 + 3 = \underline{3}$$

$$14 + 5 = \underline{19}$$

$$3 + 6 = \underline{9}$$

$$12 + 8 = \underline{20}$$

$$1 + 7 = \underline{8}$$

$$15 + 5 = \underline{20}$$

$$2 + 8 = \underline{10}$$

$$14 + 4 = \underline{18}$$

$$4 + 5 = \underline{9}$$

$$10 + 3 = \underline{13}$$

3 Welche Aufgabe hilft?

$$\underline{4} + \underline{5} = \underline{9}$$

$$14 + 5 = \underline{19}$$

$$\underline{2} + \underline{8} = \underline{10}$$

$$12 + 8 = \underline{20}$$

$$\underline{8} + \underline{2} = \underline{10}$$

$$18 + 2 = \underline{20}$$

$$\underline{1} + \underline{7} = \underline{8}$$

$$11 + 7 = \underline{18}$$

$$\underline{5} + \underline{4} = \underline{9}$$

$$15 + 4 = \underline{19}$$

$$\underline{1} + \underline{6} = \underline{7}$$

$$11 + 6 = \underline{17}$$

$$\underline{5} + \underline{1} = \underline{6}$$

$$15 + 1 = \underline{16}$$

$$\underline{6} + \underline{4} = \underline{10}$$

$$16 + 4 = \underline{20}$$

$$\underline{3} + \underline{4} = \underline{7}$$

$$13 + 4 = \underline{17}$$

$$\underline{2} + \underline{6} = \underline{8}$$

$$12 + 6 = \underline{18}$$

$$\underline{5} + \underline{0} = \underline{5}$$

$$15 + 0 = \underline{15}$$

$$\underline{7} + \underline{2} = \underline{9}$$

$$17 + 2 = \underline{19}$$