



26.4 - 30.4.21

20.4.ZUZ1 - 30.4.ZUZ1

### Montag

3	+	1	2	=	1	5
5	+	1	3	=	1	8
7	+	4	=	1	1	
6	+	5	=	1	1	
3	+	1	6	=	1	9
2	+	1	7	=	1	9
3	+	8	=	1	1	
2	+	9	=	1	1	
1	+	1	0	=	1	1
0	+	1	1	=	1	1

~~15~~ ~~16~~ ~~17~~ ~~18~~ ~~19~~ ~~20~~ ~~21~~ ~~22~~ ~~23~~ ~~24~~ ~~25~~ ~~26~~ ~~27~~ ~~28~~ ~~29~~ ~~30~~ ~~31~~

### Dienstag

8	+	8	=	1	6	
6	+	7	=	1	3	
9	+	1	0	=	1	9
8	+	3	=	1	1	
2	+	2	=	4		
6	+	8	=	1	4	
7	+	9	=	1	6	
6	+	1	2	=	1	8
3	+	1	1	=	1	4
7	+	1	0	=	1	7

~~1~~ ~~2~~ ~~3~~ ~~4~~ ~~5~~ ~~6~~ ~~7~~ ~~8~~ ~~9~~ ~~10~~ ~~11~~ ~~12~~ ~~13~~ ~~14~~ ~~15~~ ~~16~~ ~~17~~ ~~18~~ ~~19~~ ~~20~~ ~~21~~ ~~22~~ ~~23~~ ~~24~~ ~~25~~ ~~26~~ ~~27~~ ~~28~~ ~~29~~ ~~30~~ ~~31~~

### Mittwoch

9	-	6	=	3		
8	+	1	2	=	2	0
7	+	8	=	1	5	
6	+	1	1	=	1	7
5	+	6	=	1	1	
4	+	1	2	=	1	6
3	+	9	=	1	2	
1	+	1	9	=	2	0
1	+	1	0	=	1	1
0	+	1	1	=	1	1

~~1~~ ~~2~~ ~~3~~ ~~4~~ ~~5~~ ~~6~~ ~~7~~ ~~8~~ ~~9~~ ~~10~~ ~~11~~ ~~12~~ ~~13~~ ~~14~~ ~~15~~ ~~16~~ ~~17~~ ~~18~~ ~~19~~ ~~20~~ ~~21~~ ~~22~~ ~~23~~ ~~24~~ ~~25~~ ~~26~~ ~~27~~ ~~28~~ ~~29~~ ~~30~~ ~~31~~

### Donnerstag

1	0	+	8	=	1	8
1	1	+	9	=	2	0
3	+	5	=	8		
1	7	-	2	=	1	5
6	+	2	=	8		
1	3	-	4	=	9	
1	2	+	1	=	1	3
1	9	-	1	=	1	8
1	0	+	9	=	1	9
9	+	6	=	1	5	

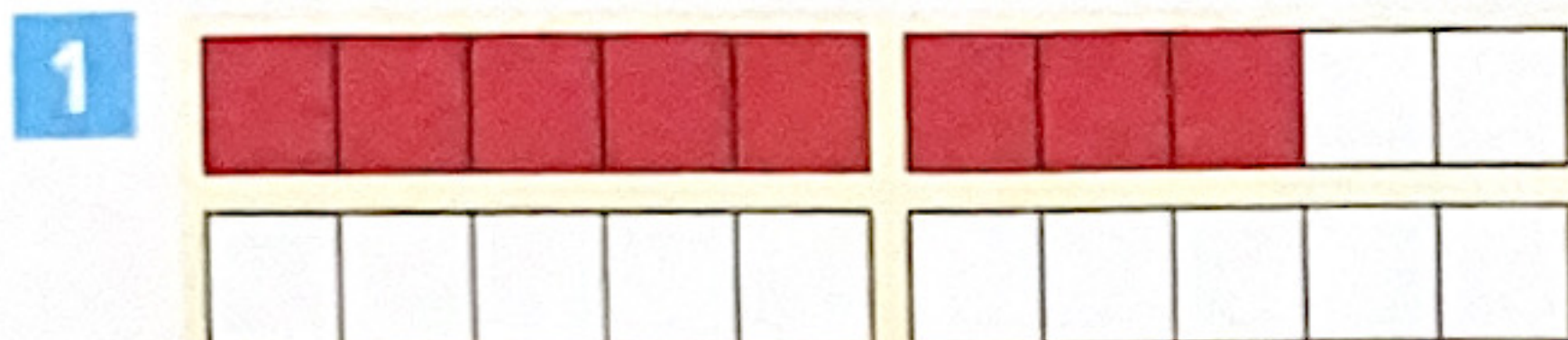
~~1~~ ~~2~~ ~~3~~ ~~4~~ ~~5~~ ~~6~~ ~~7~~ ~~8~~ ~~9~~ ~~10~~ ~~11~~ ~~12~~ ~~13~~ ~~14~~ ~~15~~ ~~16~~ ~~17~~ ~~18~~ ~~19~~ ~~20~~ ~~21~~ ~~22~~ ~~23~~ ~~24~~ ~~25~~ ~~26~~ ~~27~~ ~~28~~ ~~29~~ ~~30~~ ~~31~~

### Freitag

9	+	6	=	1	5	
9	+	7	=	1	6	
1	1	+	5	=	1	6
1	2	-	3	=	9	
9	+	8	=	1	7	
9	+	7	=	1	6	
8	+	3	=	1	1	
7	+	6	=	1	3	
1	0	-	3	=	7	
1	5	+	3	=	1	8

~~1~~ ~~2~~ ~~3~~ ~~4~~ ~~5~~ ~~6~~ ~~7~~ ~~8~~ ~~9~~ ~~10~~ ~~11~~ ~~12~~ ~~13~~ ~~14~~ ~~15~~ ~~16~~ ~~17~~ ~~18~~ ~~19~~ ~~20~~ ~~21~~ ~~22~~ ~~23~~ ~~24~~ ~~25~~ ~~26~~ ~~27~~ ~~28~~ ~~29~~ ~~30~~ ~~31~~

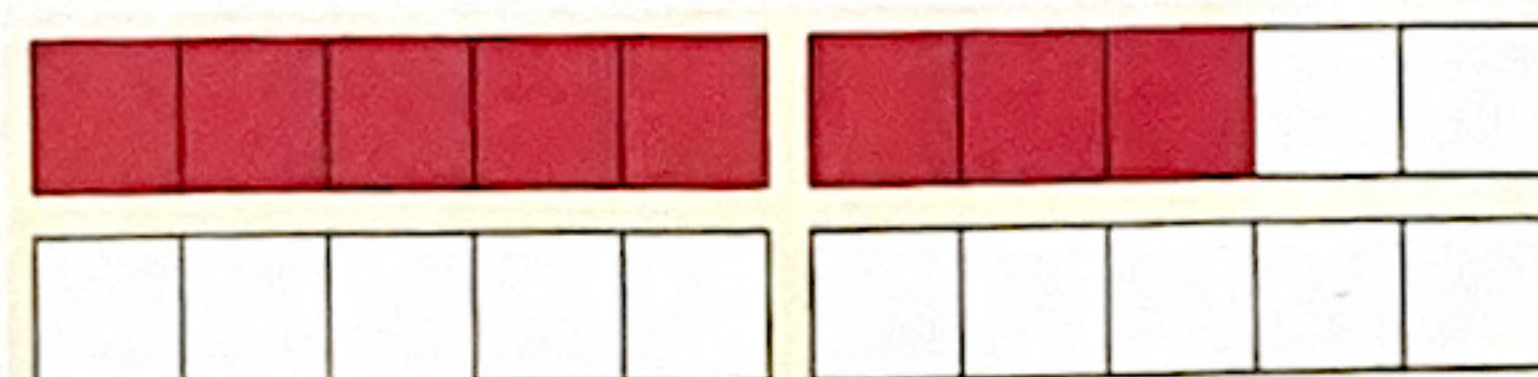




$$8 + 2 = \underline{10}$$

$$8 + 3 = \underline{11}$$

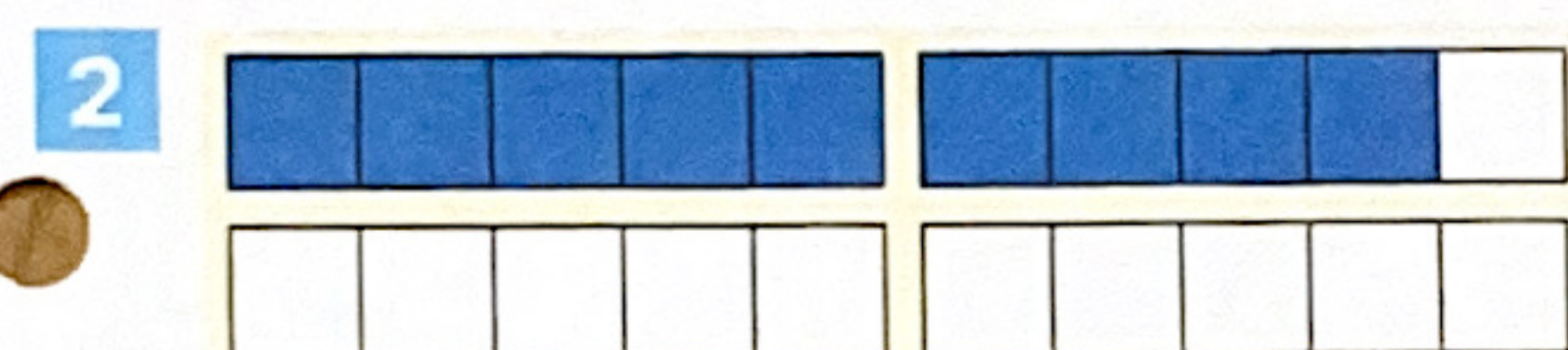
$$8 + 4 = \underline{12}$$



$$8 + 6 = \underline{14}$$

$$8 + 7 = \underline{15}$$

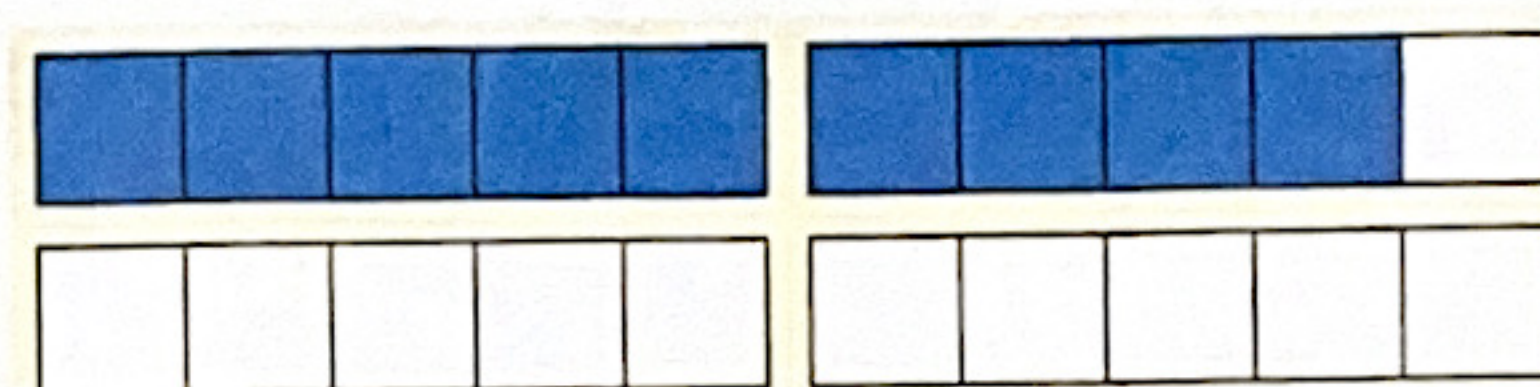
$$8 + 8 = \underline{16}$$



$$9 + 1 = \underline{10}$$

$$9 + 2 = \underline{11}$$

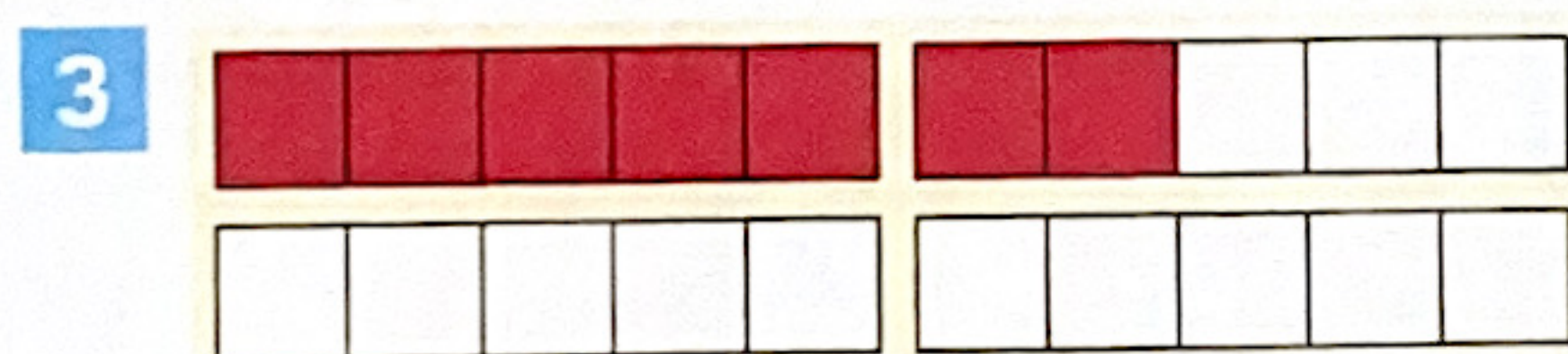
$$9 + 3 = \underline{12}$$



$$9 + 7 = \underline{16}$$

$$9 + 8 = \underline{17}$$

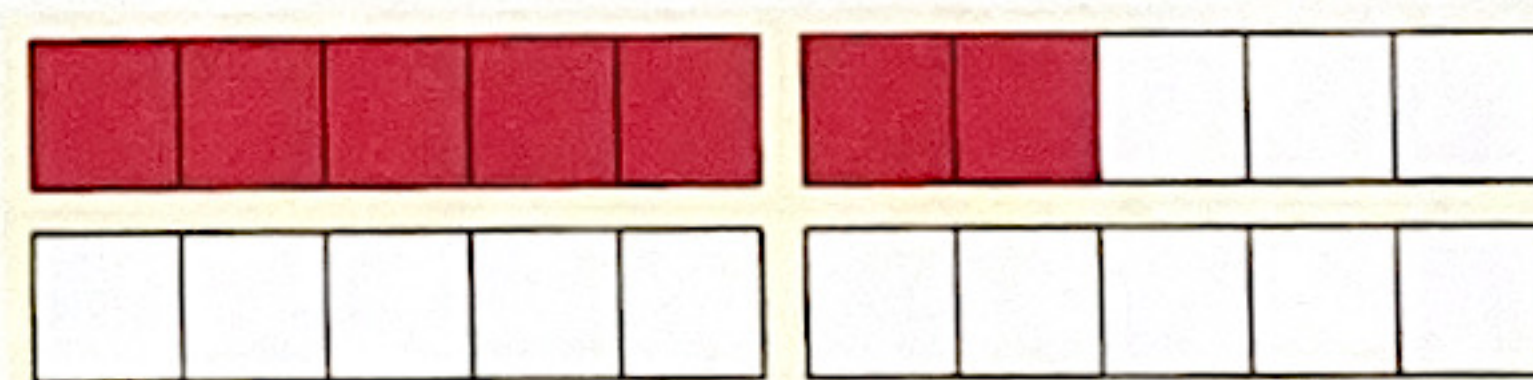
$$9 + 9 = \underline{18}$$



$$7 + 3 = \underline{10}$$

$$7 + 5 = \underline{12}$$

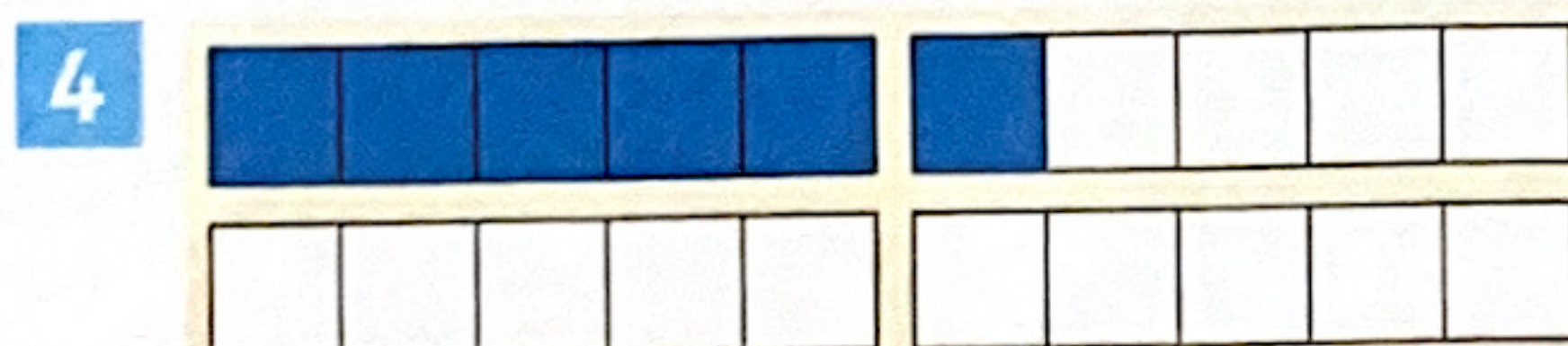
$$7 + 7 = \underline{14}$$



$$7 + 4 = \underline{11}$$

$$7 + 6 = \underline{13}$$

$$7 + 8 = \underline{15}$$



$$6 + 4 = \underline{10}$$

$$6 + 8 = \underline{14}$$

$$6 + 9 = \underline{15}$$



$$6 + 5 = \underline{11}$$

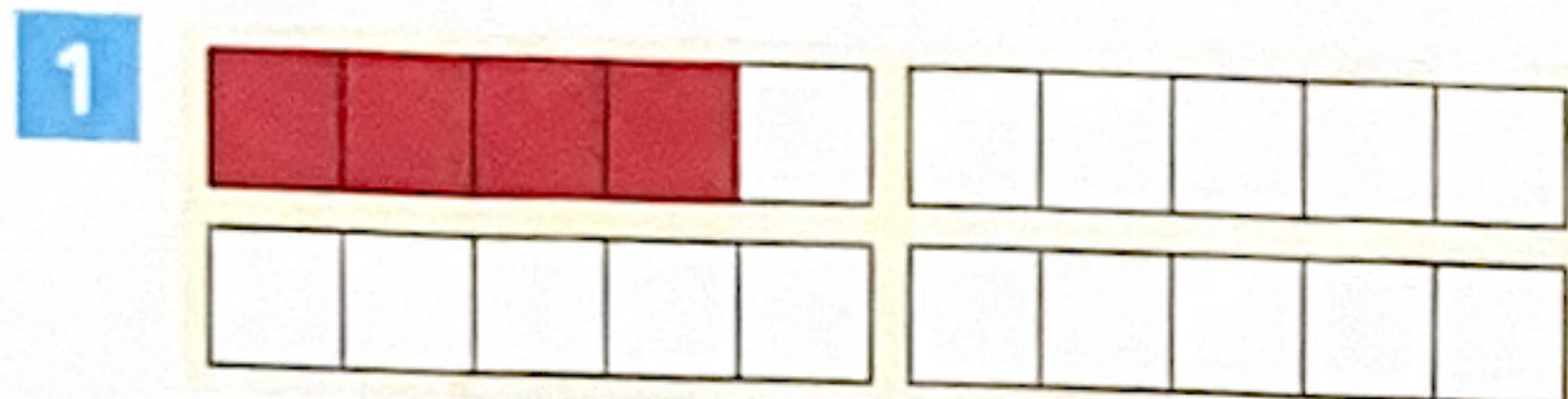
$$6 + 6 = \underline{12}$$

$$6 + 7 = \underline{13}$$

Evtl. Material legen und rechnen.



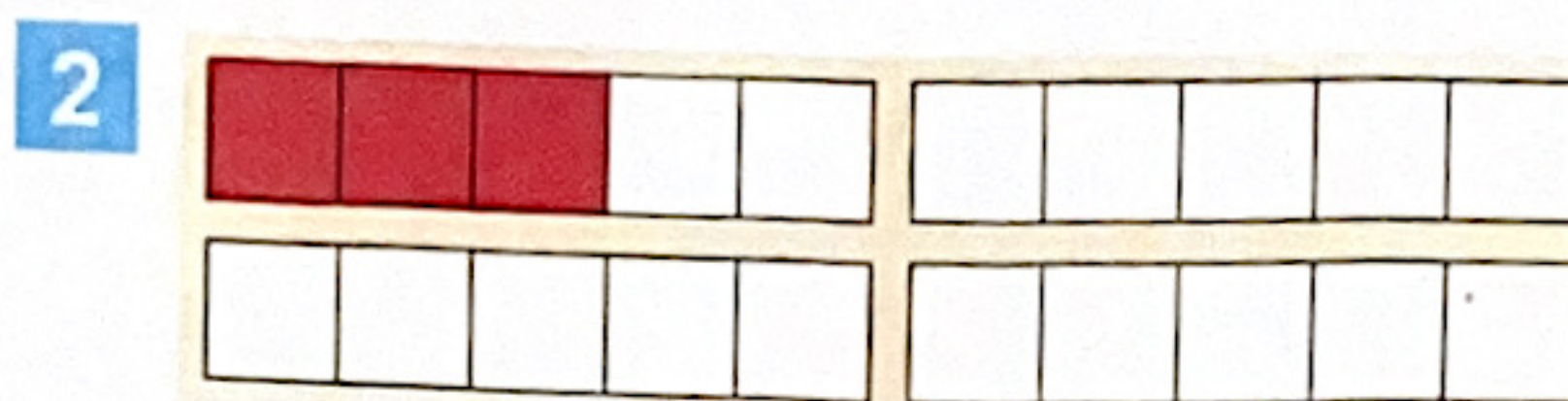
# Addieren mit Zehnerübergang



$$4 + 8 = \underline{12}$$

$$4 + 9 = \underline{13}$$

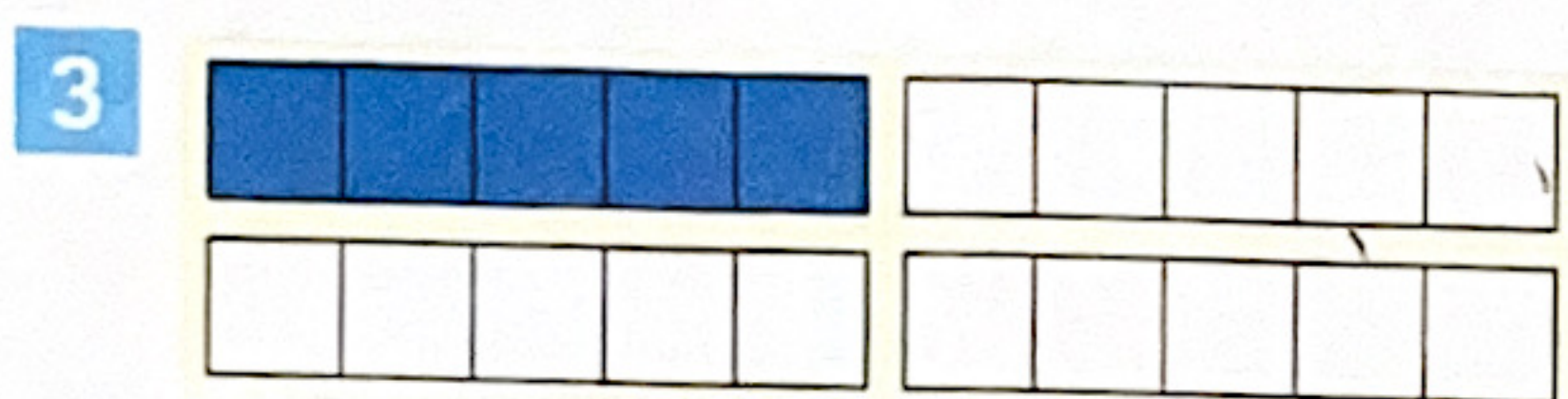
$$4 + 7 = \underline{11}$$



$$3 + 9 = \underline{12}$$

$$3 + 7 = \underline{10}$$

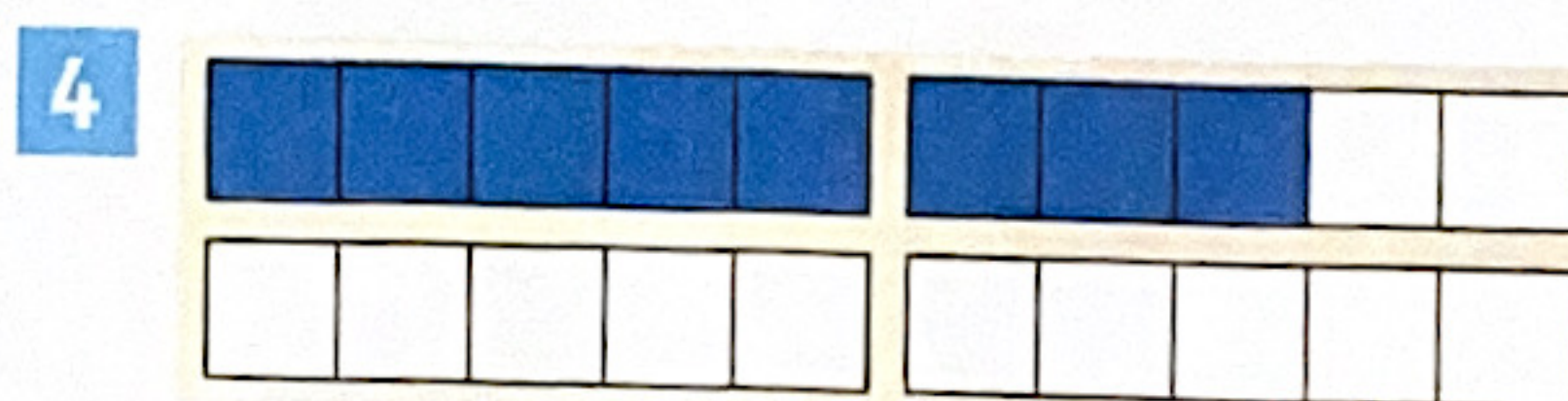
$$3 + 8 = \underline{11}$$



$$5 + 7 = \underline{12}$$

$$5 + 9 = \underline{14}$$

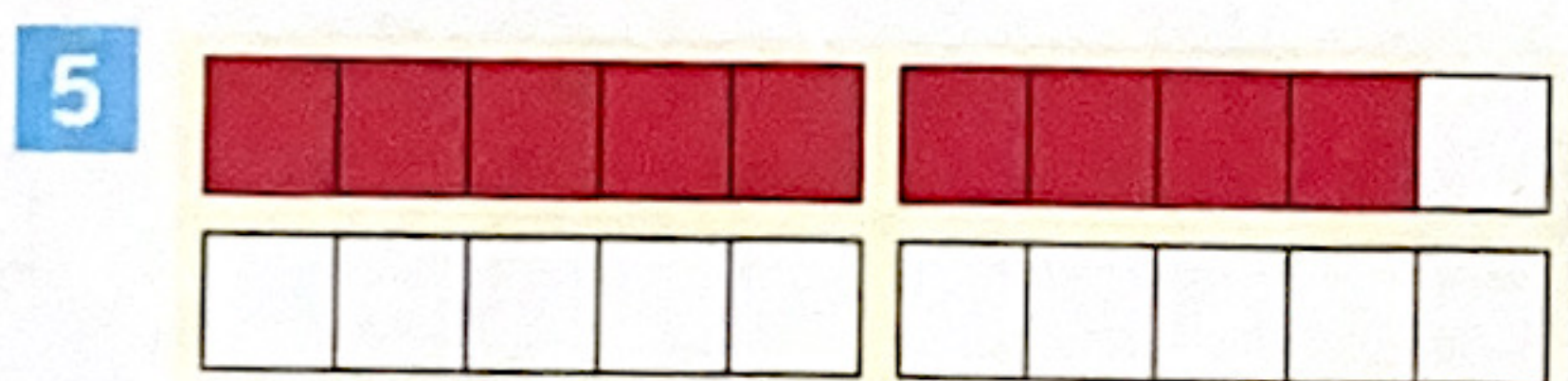
$$5 + 8 = \underline{13}$$



$$8 + 5 = \underline{13}$$

$$8 + 9 = \underline{17}$$

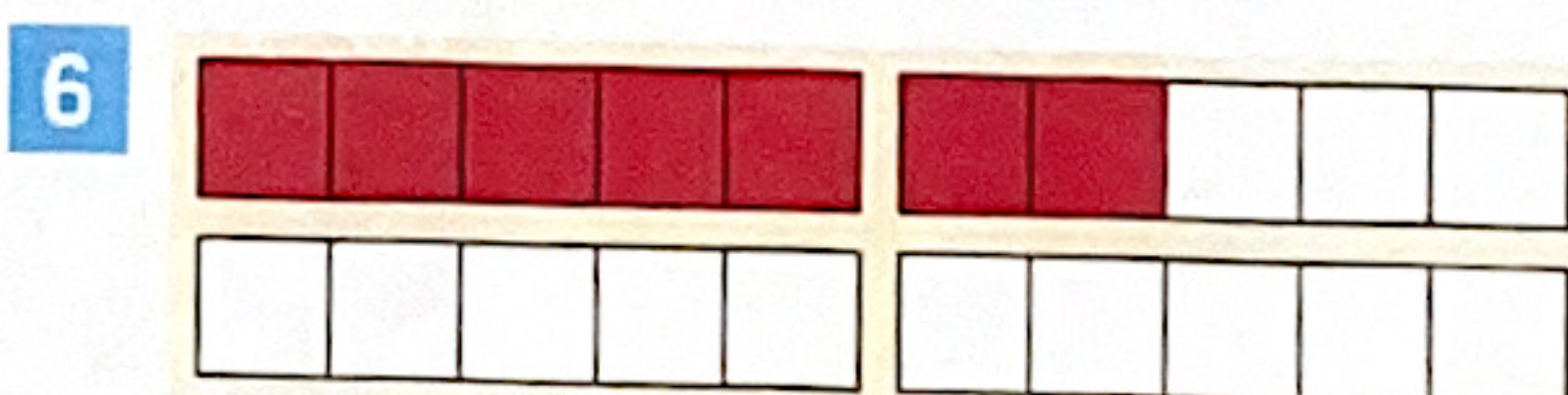
$$8 + 7 = \underline{15}$$



$$9 + 4 = \underline{13}$$

$$9 + 6 = \underline{15}$$

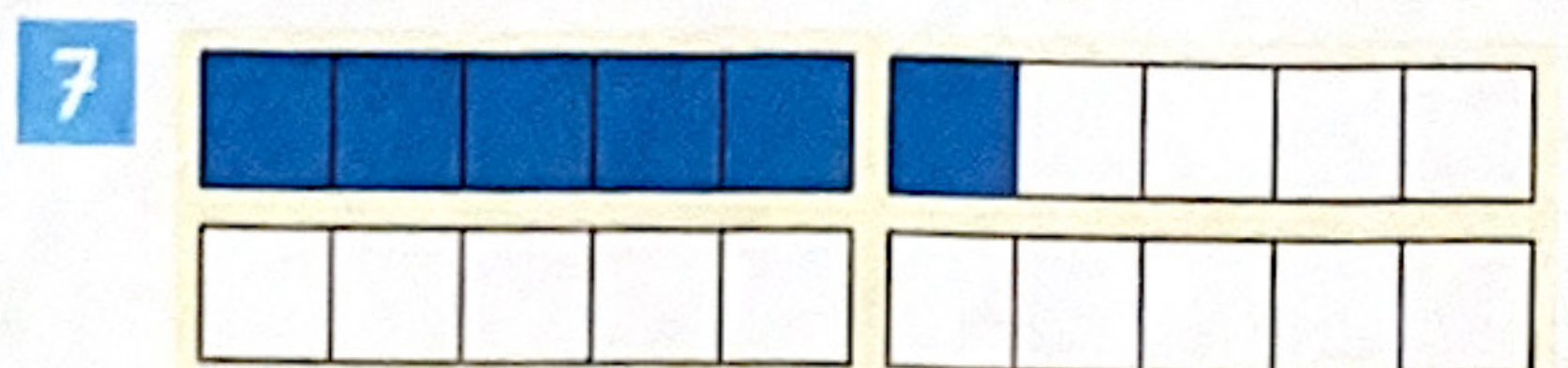
$$9 + 5 = \underline{14}$$



$$7 + 6 = \underline{13}$$

$$7 + 9 = \underline{16}$$

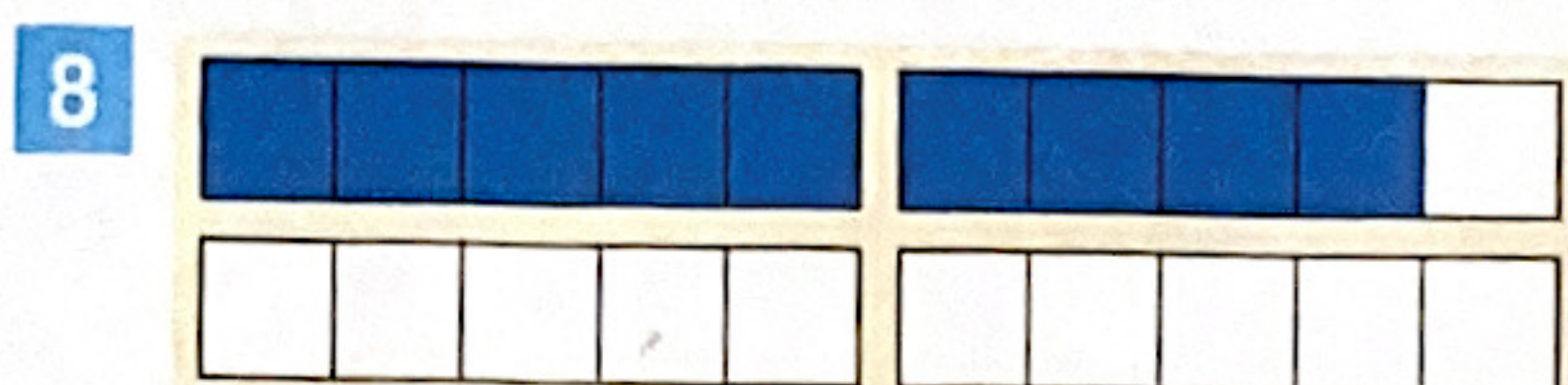
$$7 + 8 = \underline{15}$$



$$6 + 8 = \underline{14}$$

$$6 + 7 = \underline{13}$$

$$6 + 9 = \underline{15}$$



$$9 + 3 = \underline{12}$$

$$9 + 8 = \underline{17}$$

$$9 + 9 = \underline{18}$$

Evtl. Material legen und rechnen.



# Addieren mit Zehnerübergang – Übungen

1 Rechne in zwei Schritten.

$$8 + 6$$

$$8 + 2 = 10$$

$$10 + 4 = 14$$

$$5 + 8$$

$$5 + 5 = 10$$

$$10 + 3 = 13$$

$$8 + 7$$

$$8 + 2 = 10$$

$$10 + 5 = 15$$

$$7 + 6$$

$$7 + 3 = 10$$

$$10 + 3 = 13$$

$$8 + 9$$

$$8 + 2 = 10$$

$$10 + 7 = 17$$

$$9 + 5$$

$$9 + 1 = 10$$

$$10 + 4 = 14$$

$$4 + 8$$

$$4 + 6 = 10$$

$$10 + 8 = 18$$

$$7 + 9$$

$$7 + 3 = 10$$

$$10 + 6 = 16$$

2 Erst verdoppeln, dann die Nachbaraufgabe.

$$8 + 9 = 17$$

$$6 + 7 = 13$$

$$6 + 5 = 11$$

$$7 + 8 = 15$$

$$7 + 6 = 13$$

$$9 + 9 = 18$$

$$7 + 7 = 14$$

$$5 + 5 = 10$$

$$8 + 8 = 16$$

$$6 + 6 = 12$$

$$10 + 9 = 19$$

$$8 + 7 = 15$$

$$4 + 5 = 9$$

$$9 + 8 = 17$$

$$5 + 6 = 11$$

3 Rechne erst die passende Aufgabe mit 10.

$$9 + 6 = 15$$

$$4 + 9 = 13$$

$$9 + 8 = 17$$

$$9 + 3 = 12$$

$$7 + 9 = 16$$

$$10 + 6 = 16$$

$$4 + 10 = 14$$

$$10 + 8 = 18$$

$$10 + 3 = 13$$

$$7 + 10 = 17$$

4 Rechne auf deinem Weg.

$$8 + 4 = 12$$

$$5 + 8 = 13$$

$$7 + 4 = 11$$

$$6 + 5 = 11$$

$$6 + 9 = 15$$

$$7 + 6 = 13$$

$$9 + 7 = 16$$

$$6 + 7 = 13$$

$$9 + 3 = 11$$

$$9 + 4 = 13$$

$$6 + 8 = 14$$

$$8 + 8 = 16$$

$$3 + 8 = 11$$

$$7 + 5 = 12$$

$$8 + 7 = 15$$

5 Rechne geschickt.

$$3 + 7 = 10$$

$$3 + 7 + 2 = 12$$

$$1 + 9 + 5 = 15$$

$$8 + 2 + 9 = 19$$

$$5 + 5 + 3 = 13$$

$$9 + 1 = 10$$

$$9 + 2 + 1 = 12$$

$$3 + 5 + 7 = 15$$

$$4 + 2 + 6 = 12$$

$$5 + 1 + 5 = 11$$

$$5 + 5 = 10$$

$$2 + 5 + 5 = 12$$

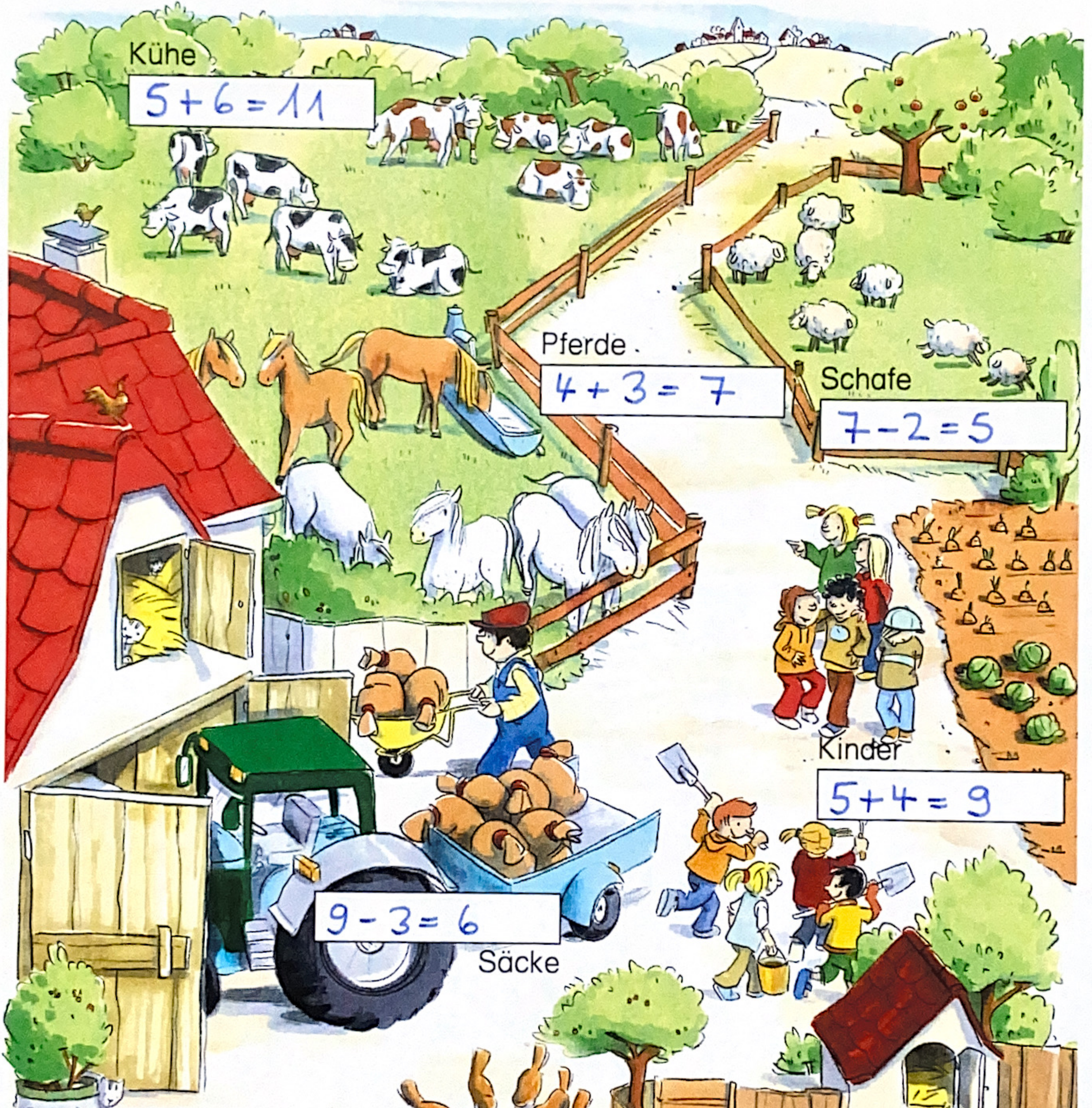
$$3 + 3 + 7 = 13$$

$$8 + 1 + 2 = 11$$

$$7 + 9 + 3 = 19$$

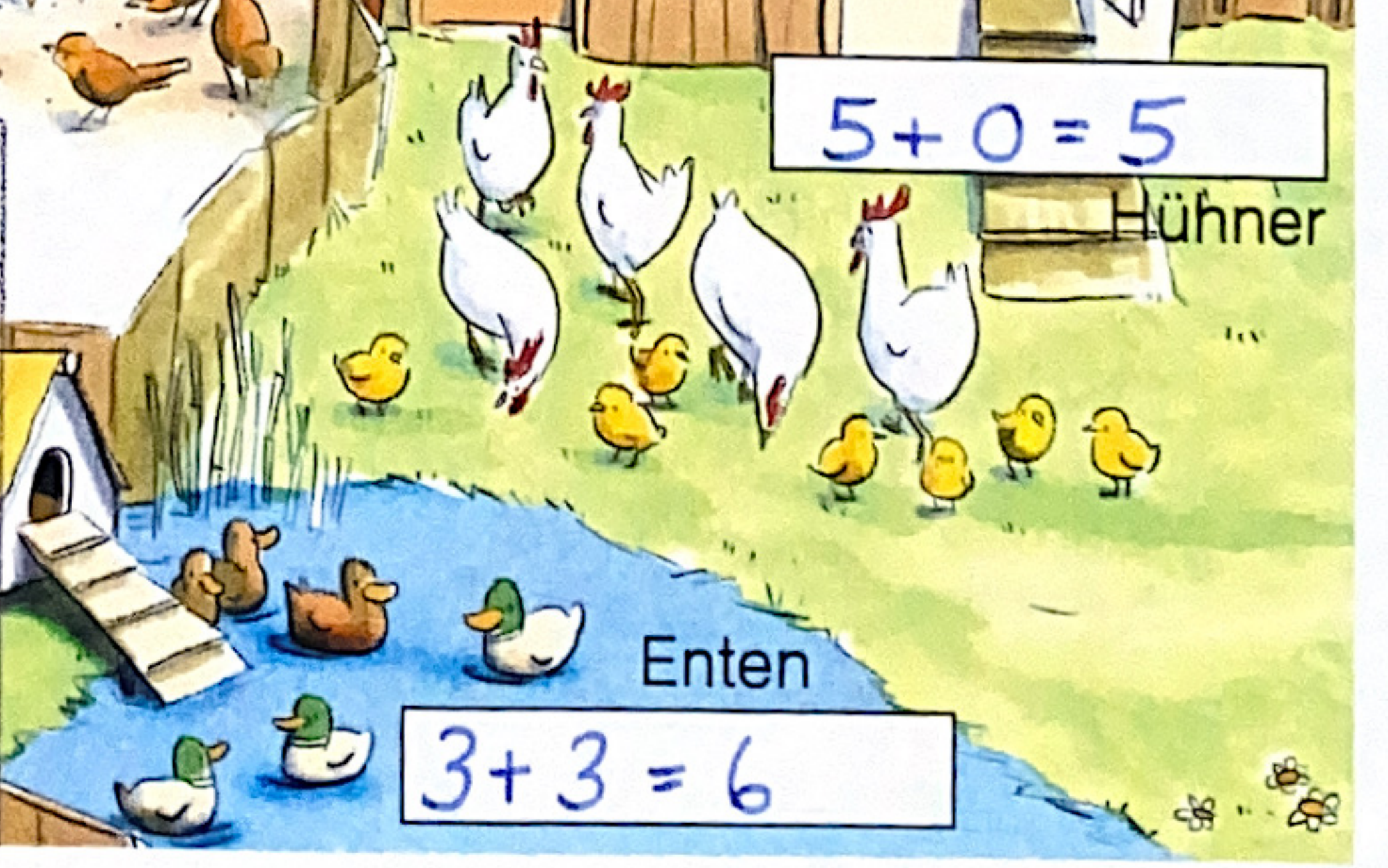


1 Erzählt und rechnet.



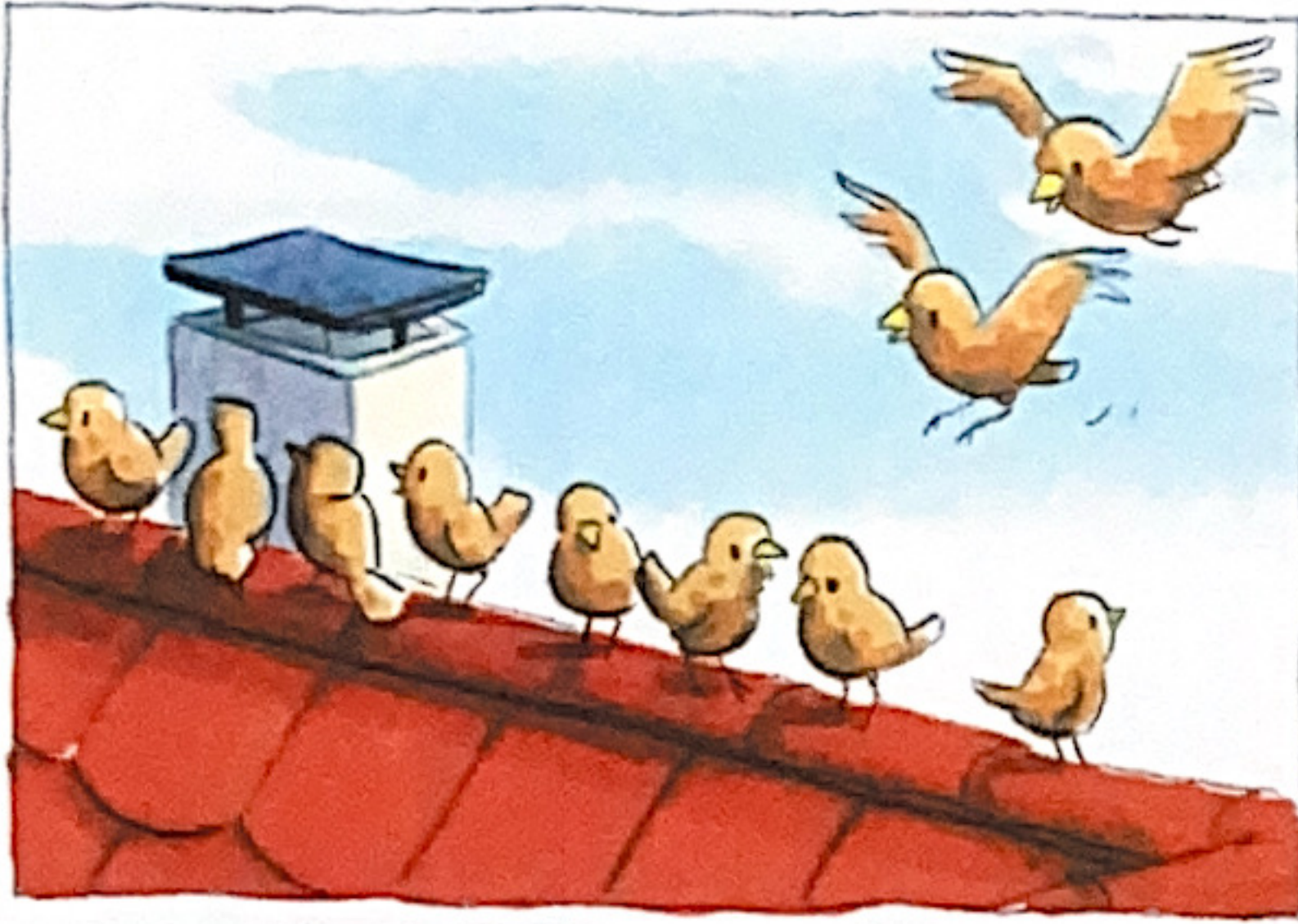
2 Wie viele?

Spaten		2
Küken		7
Kohlköpfe		5
Katzen		3
Äpfel		7





3 Erzählt und rechnet.

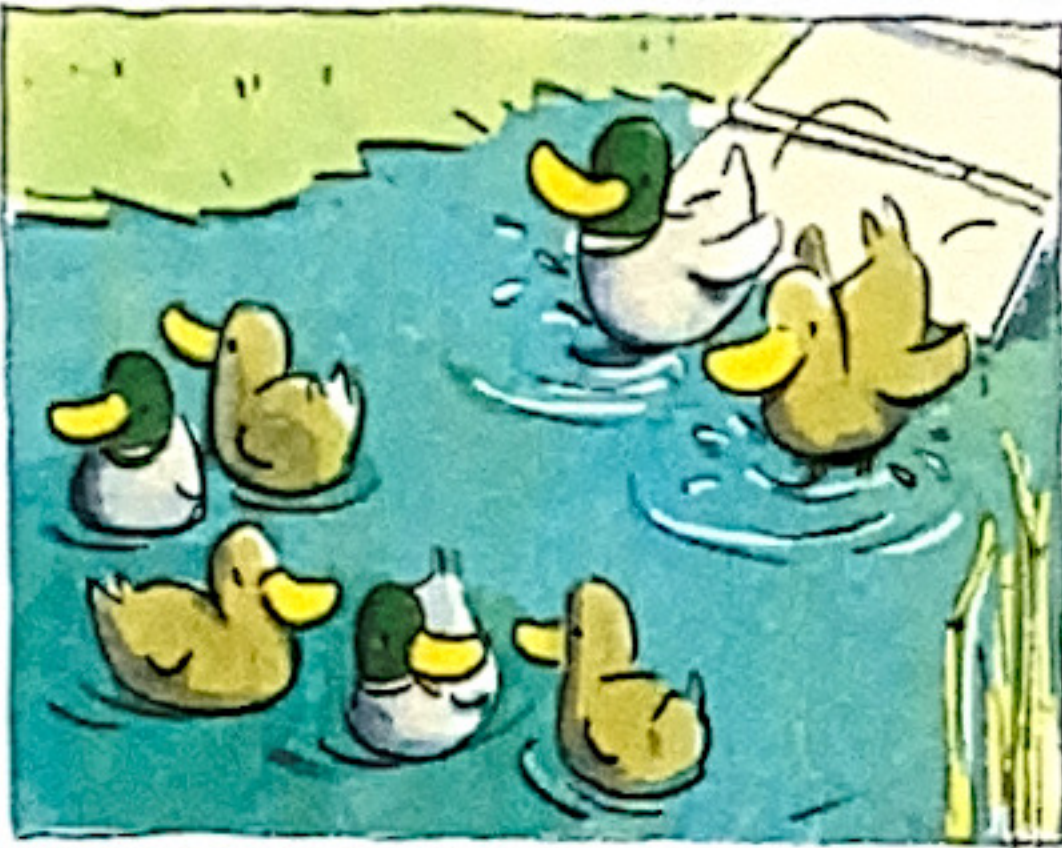


$$8 + 2 = 10$$



$$10 - 3 = 7$$

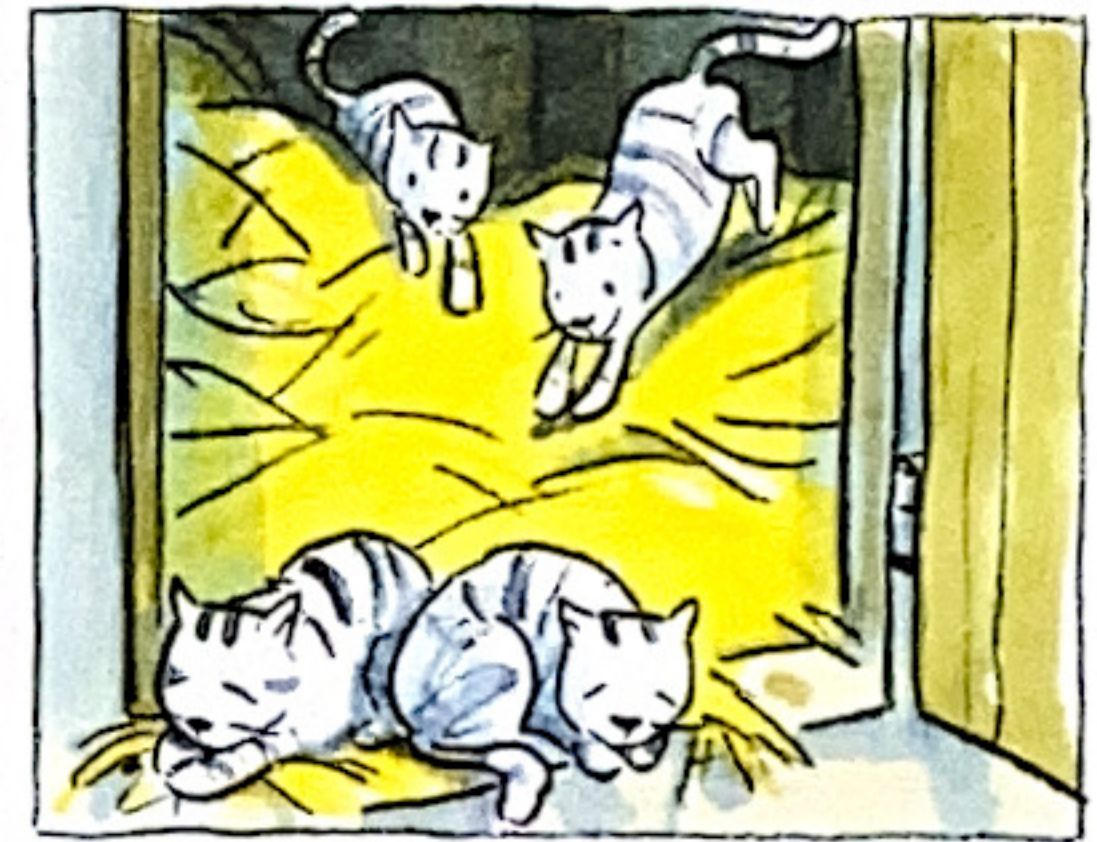
4



$$5 + 2 = 7$$



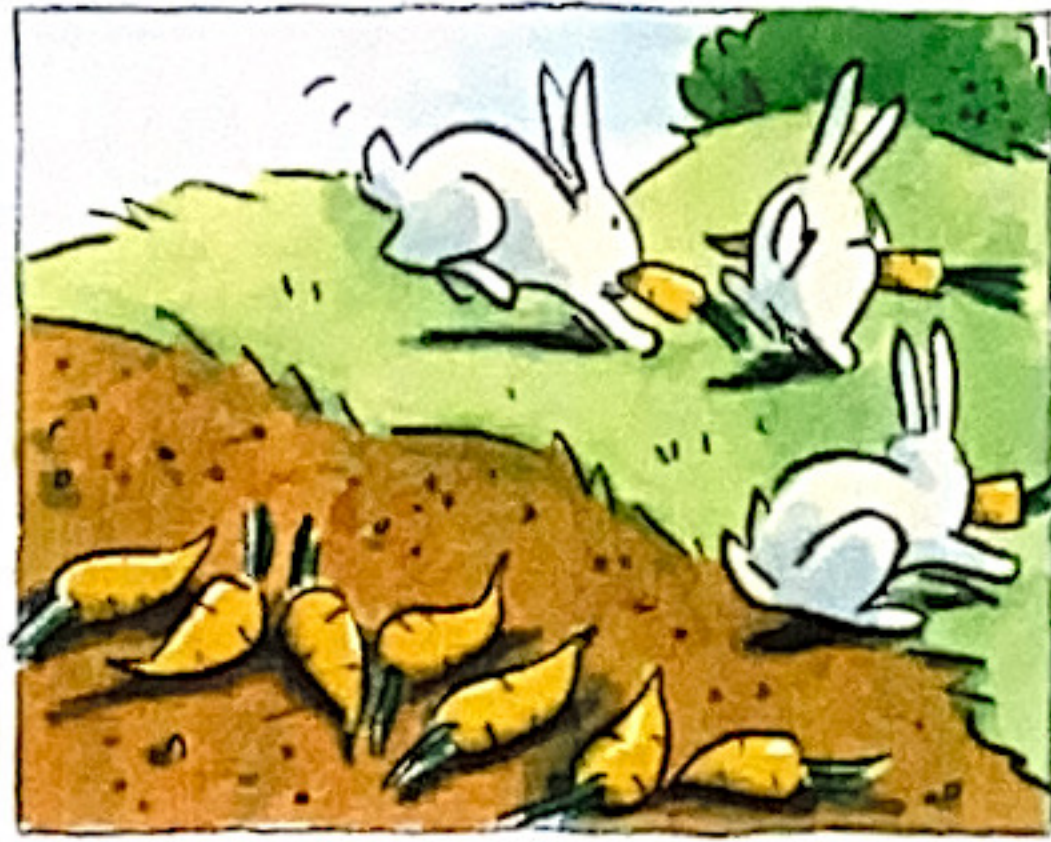
$$6 - 3 = 3$$



$$2 + 2 = 4$$



$$9 - 2 = 7$$



$$10 - 3 = 7$$



$$7 - 3 = 4$$



$$6 - 1 = 5$$




$$3 + 3 = 6$$



$$7 - 3 = 4$$



Welche Aufgabe passt zum Bild? Kreuze an. 

1



$3 - 2 = \underline{\quad}$   
  $2 + 3 = \underline{5}$

2



$5 - 2 = \underline{3}$   
  $5 + 2 = \underline{\quad}$

3



$2 + 4 = \underline{6}$   
  $4 - 2 = \underline{\quad}$

4



$1 + 4 = \underline{\quad}$   
  $4 - 3 = \underline{1}$

5



$3 - 2 = \underline{1}$   
  $2 + 2 = \underline{\quad}$

6



$3 + 4 = \underline{7}$   
  $4 - 3 = \underline{\quad}$

7




$5 - 2 = \underline{\quad}$   
  $5 + 2 = \underline{7}$

8

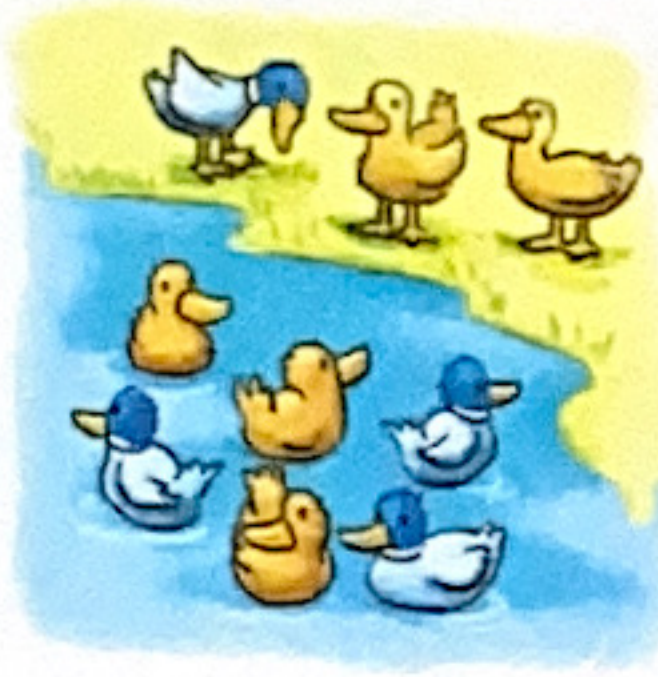


$7 - 3 = \underline{4}$   
  $4 + 4 = \underline{\quad}$



Welche Aufgabe passt zum Bild? Kreuze an. 

1

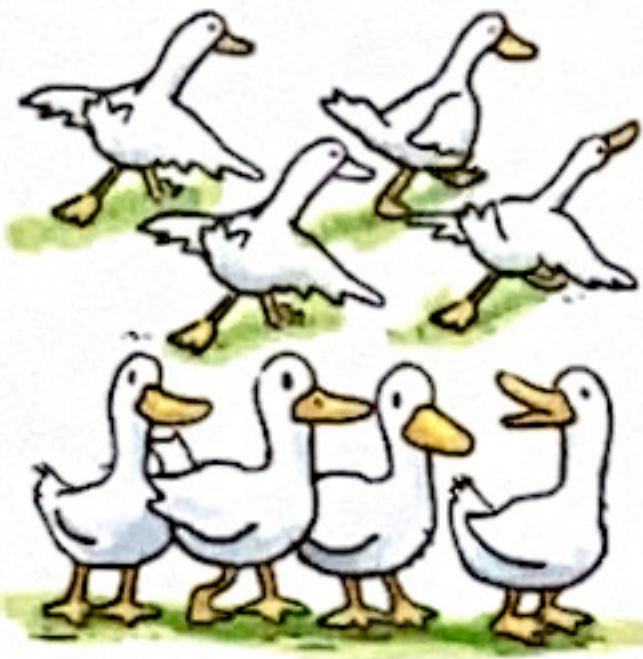


- $6 - 3 = \underline{\quad}$
- $6 + 3 = \underline{9}$
- $9 - 4 = \underline{\quad}$



- $4 - 3 = \underline{\quad}$
- $7 + 3 = \underline{\quad}$
- $7 - 3 = \underline{4}$

2

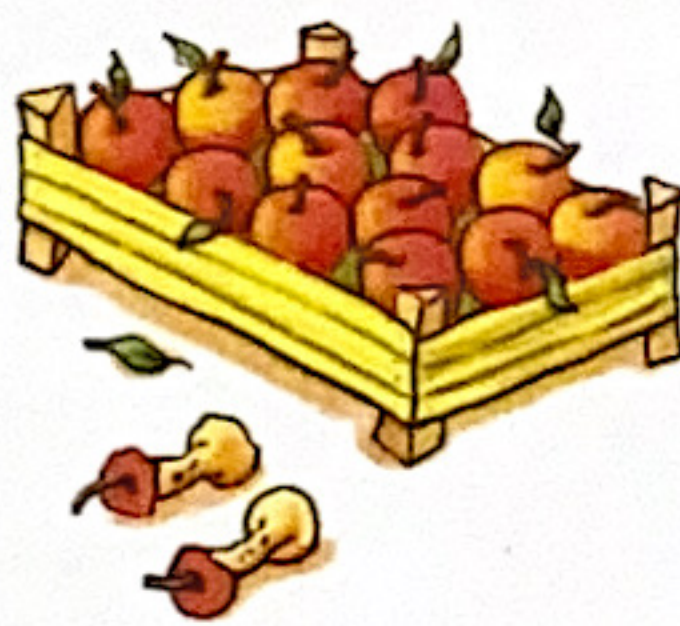


- $8 - 4 = \underline{4}$
- $4 + 3 = \underline{\quad}$
- $4 - 4 = \underline{\quad}$

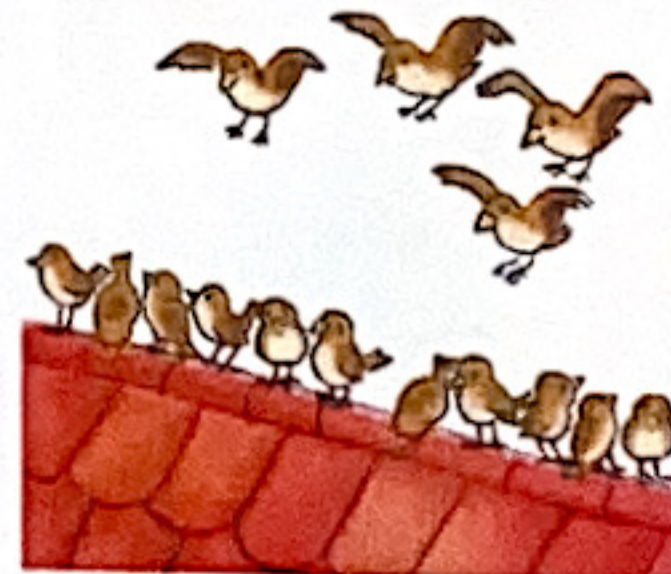


- $9 - 6 = \underline{\quad}$
- $6 + 4 = \underline{10}$
- $6 - 4 = \underline{\quad}$

3



- $15 + 2 = \underline{\quad}$
- $13 - 2 = \underline{\quad}$
- $15 - 2 = \underline{13}$



- $11 + 4 = \underline{15}$
- $15 - 4 = \underline{\quad}$
- $11 - 4 = \underline{\quad}$

4

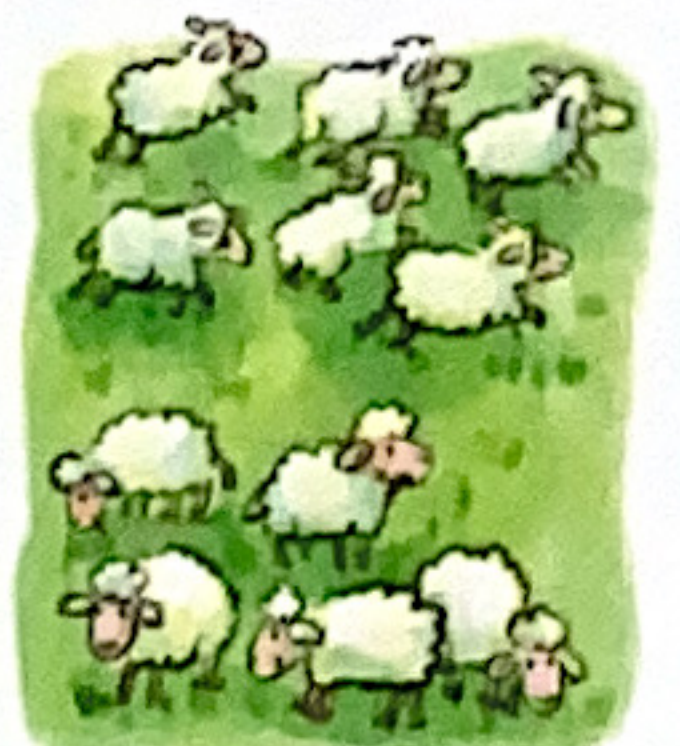


- $12 + 4 = \underline{18}$
- $16 + 4 = \underline{\quad}$
- $12 - 4 = \underline{\quad}$



- $12 - 5 = \underline{\quad}$
- $12 - 4 = \underline{\quad}$
- $17 - 5 = \underline{12}$

5



- $6 - 5 = \underline{\quad}$
- $11 - 6 = \underline{5}$
- $6 + 6 = \underline{\quad}$



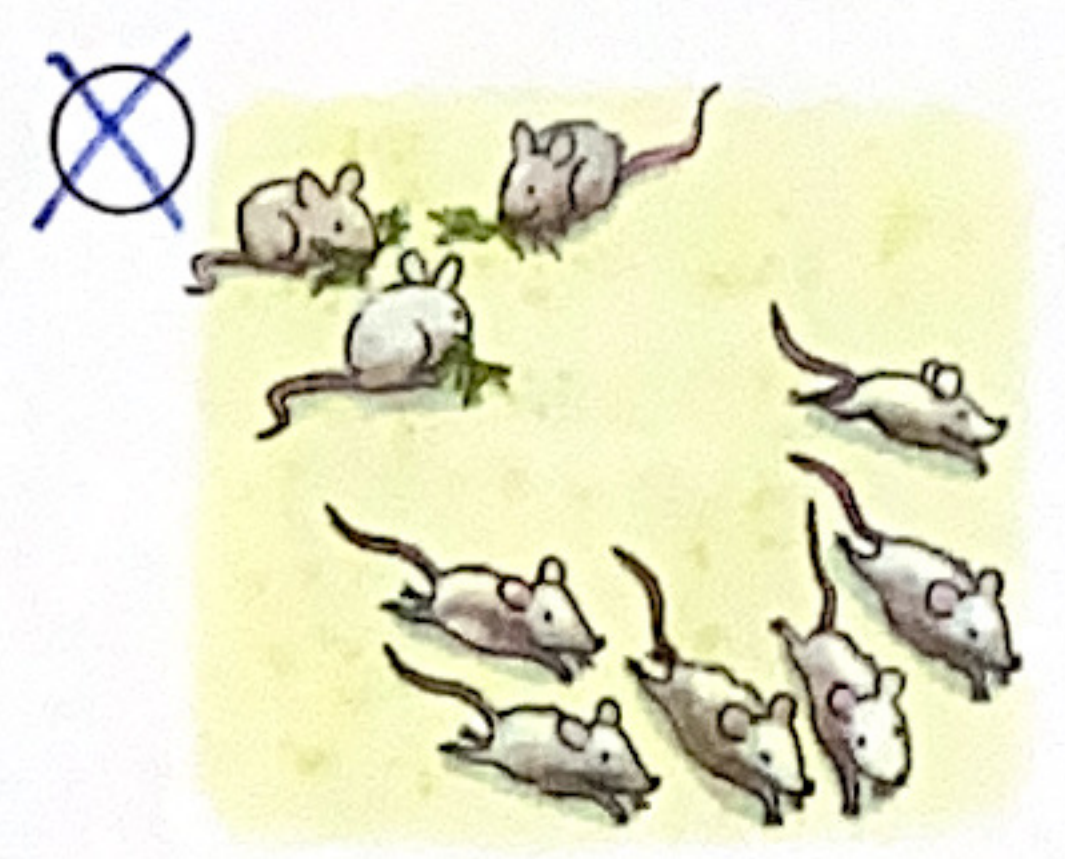
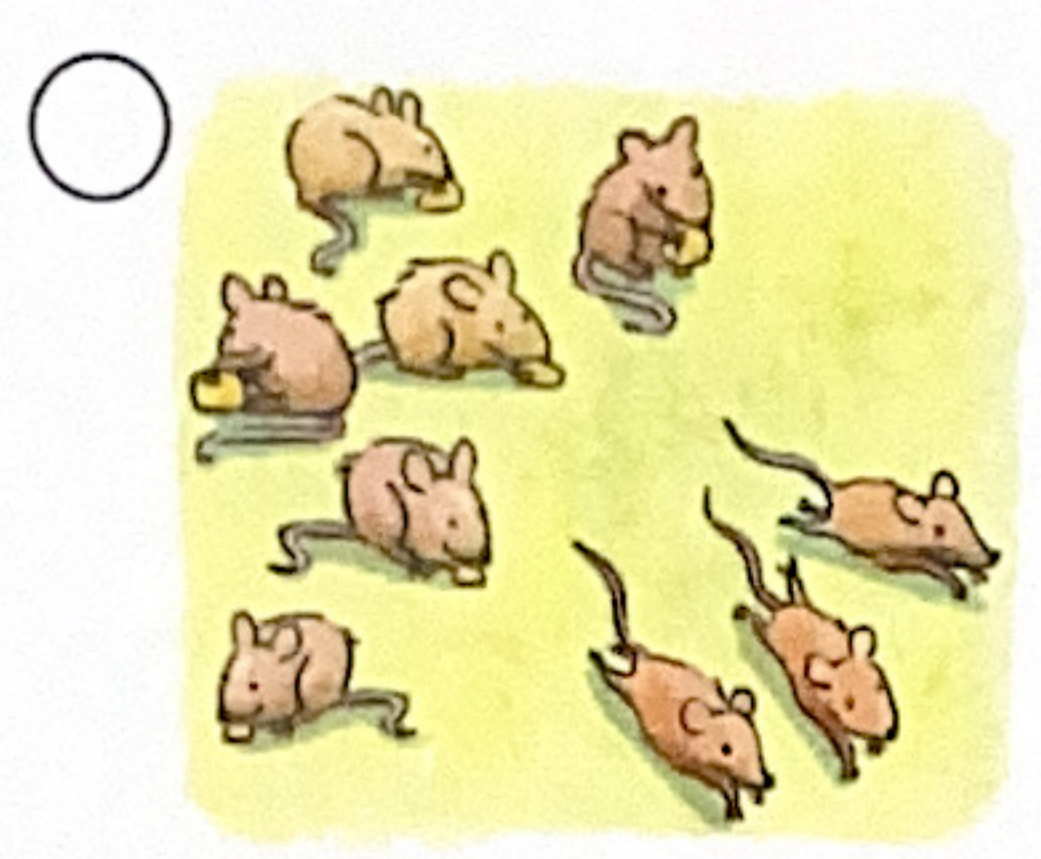
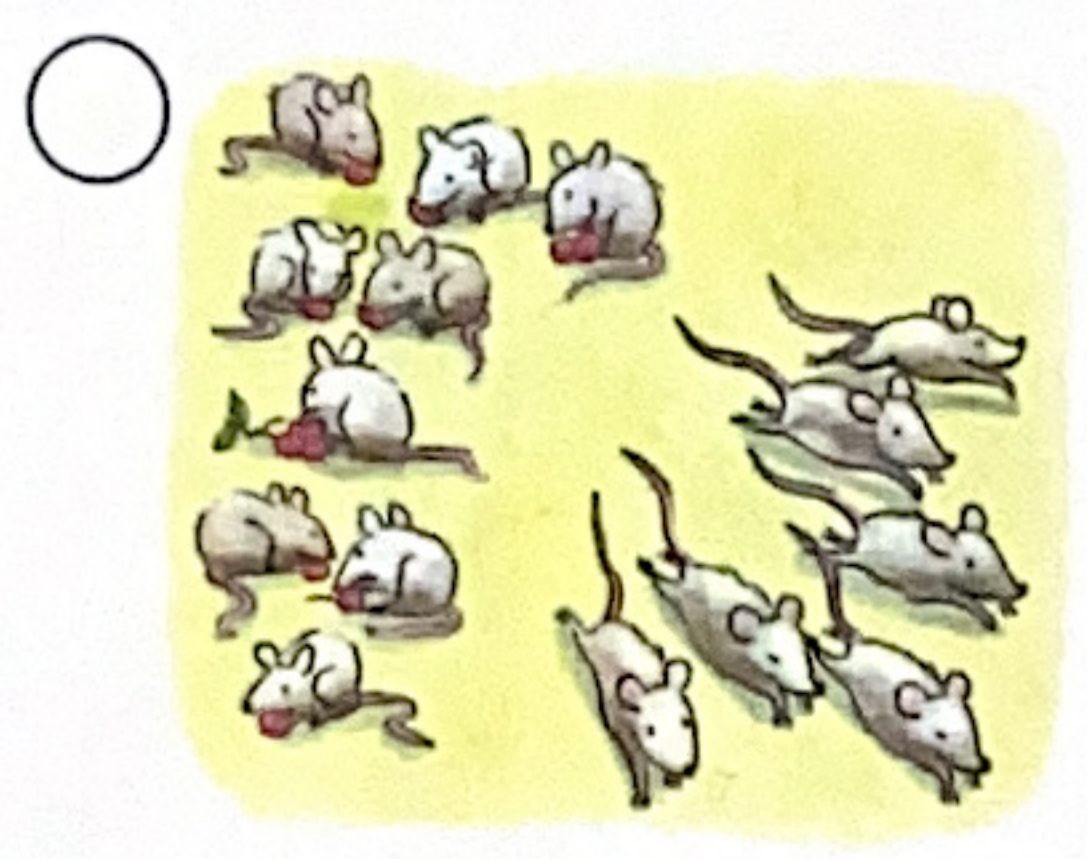
- $7 - 6 = \underline{\quad}$
- $13 - 6 = \underline{7}$
- $13 + 7 = \underline{\quad}$



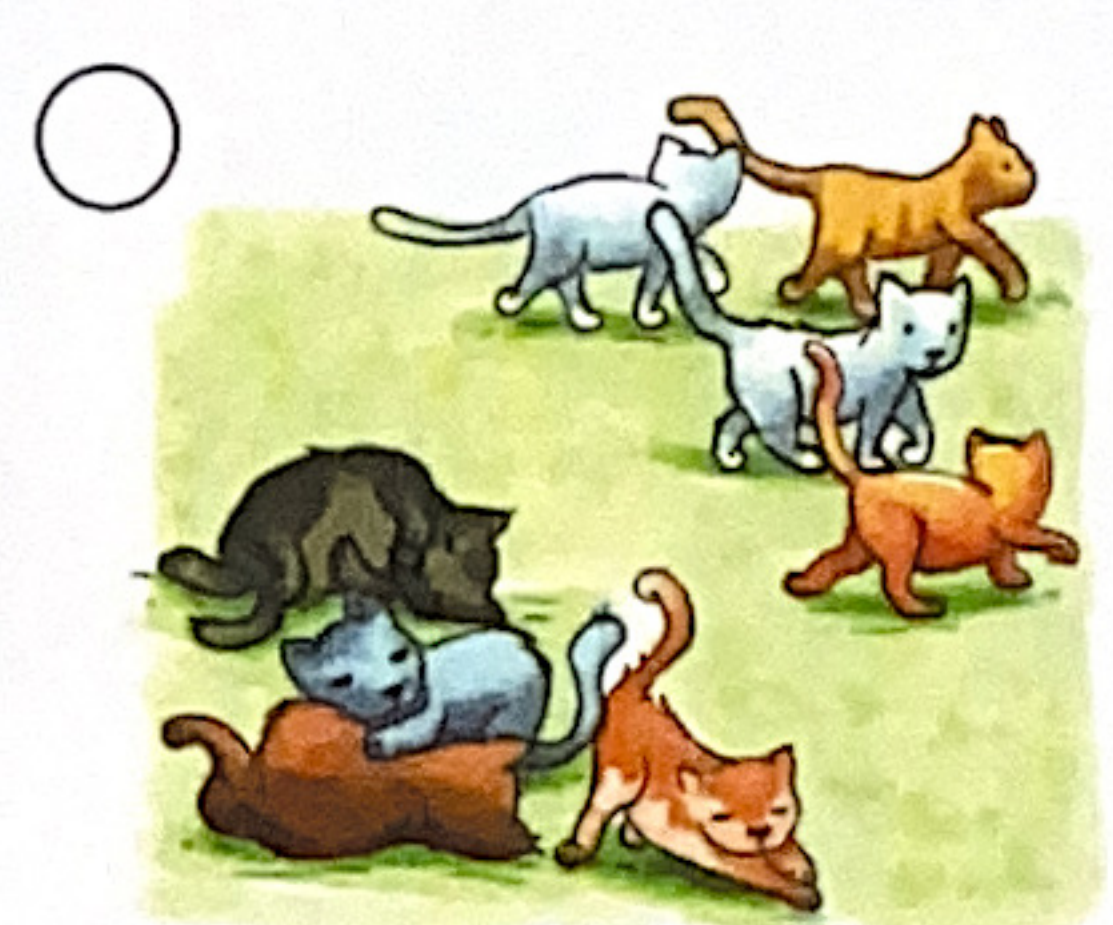
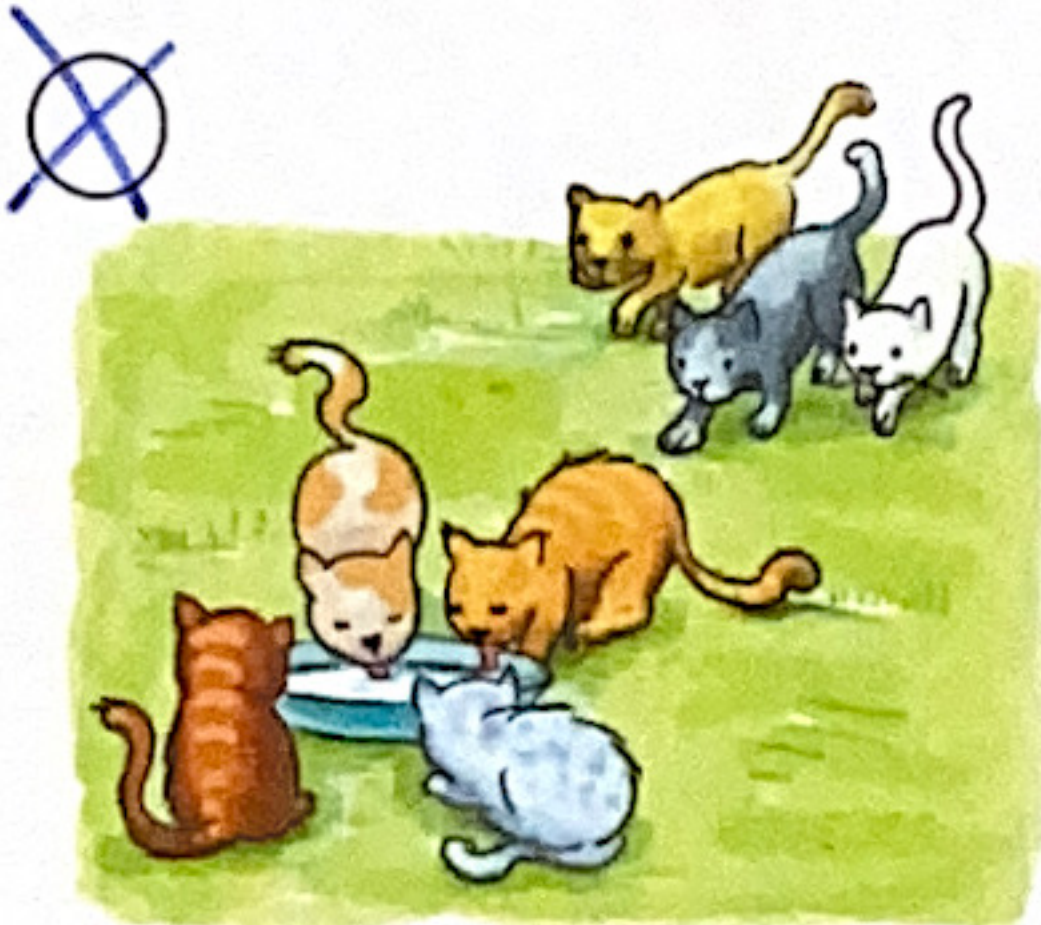
Welches Bild passt zur Aufgabe? Kreuze an.



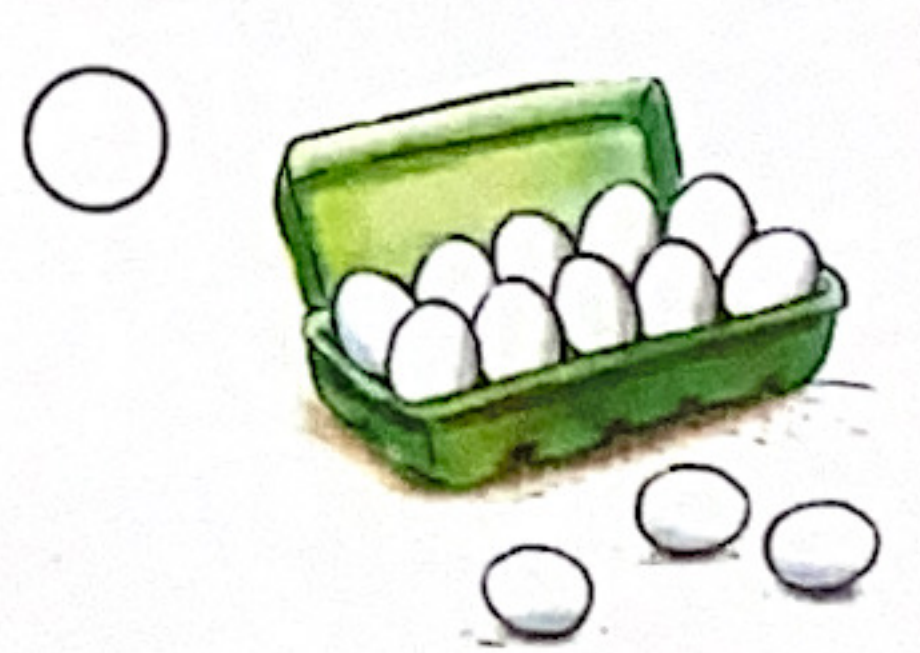
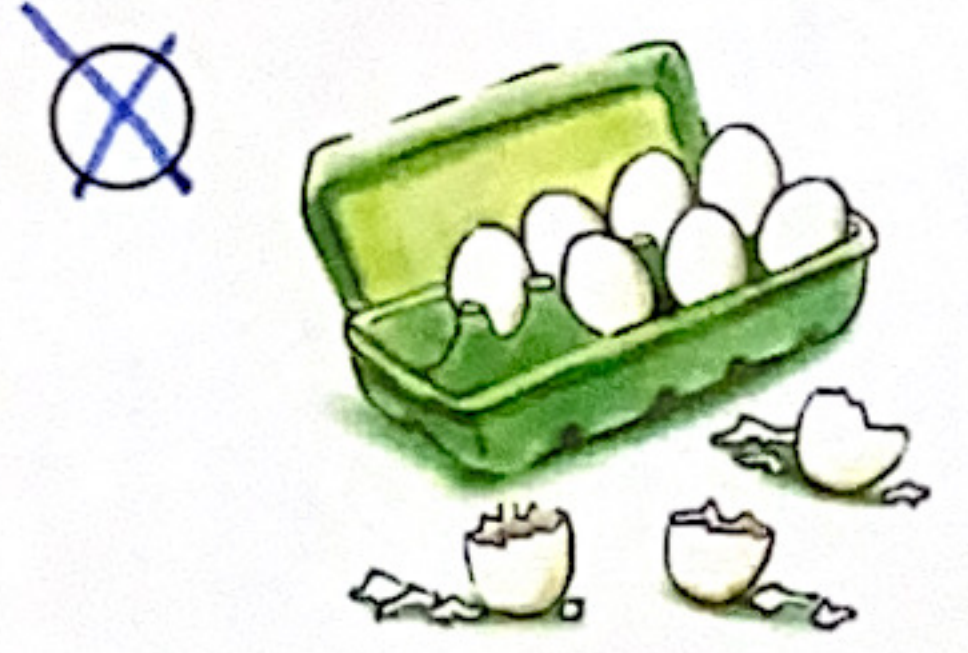
**1**  $9 - 6 = \underline{3}$



**2**  $4 + 3 = \underline{7}$



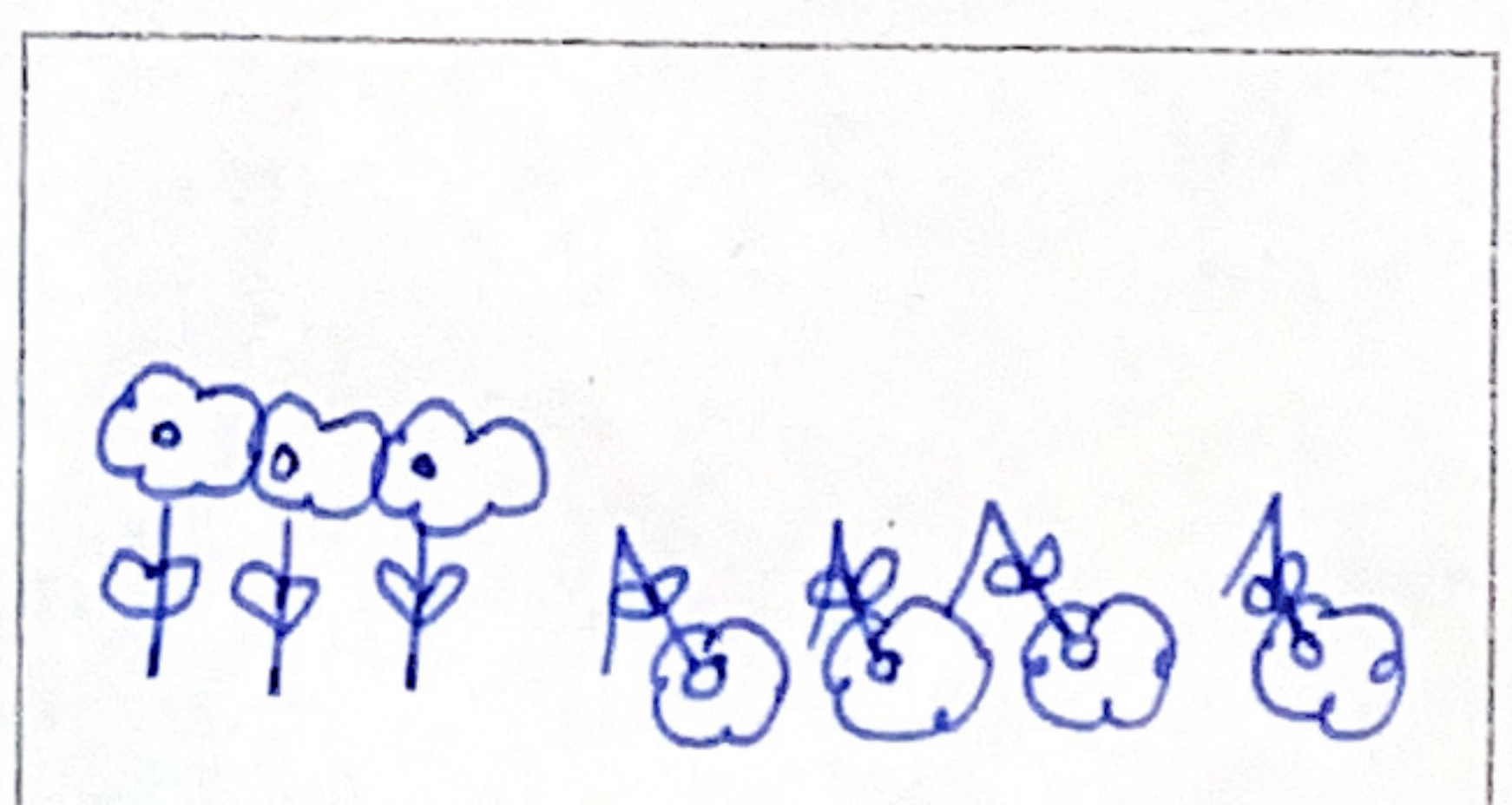
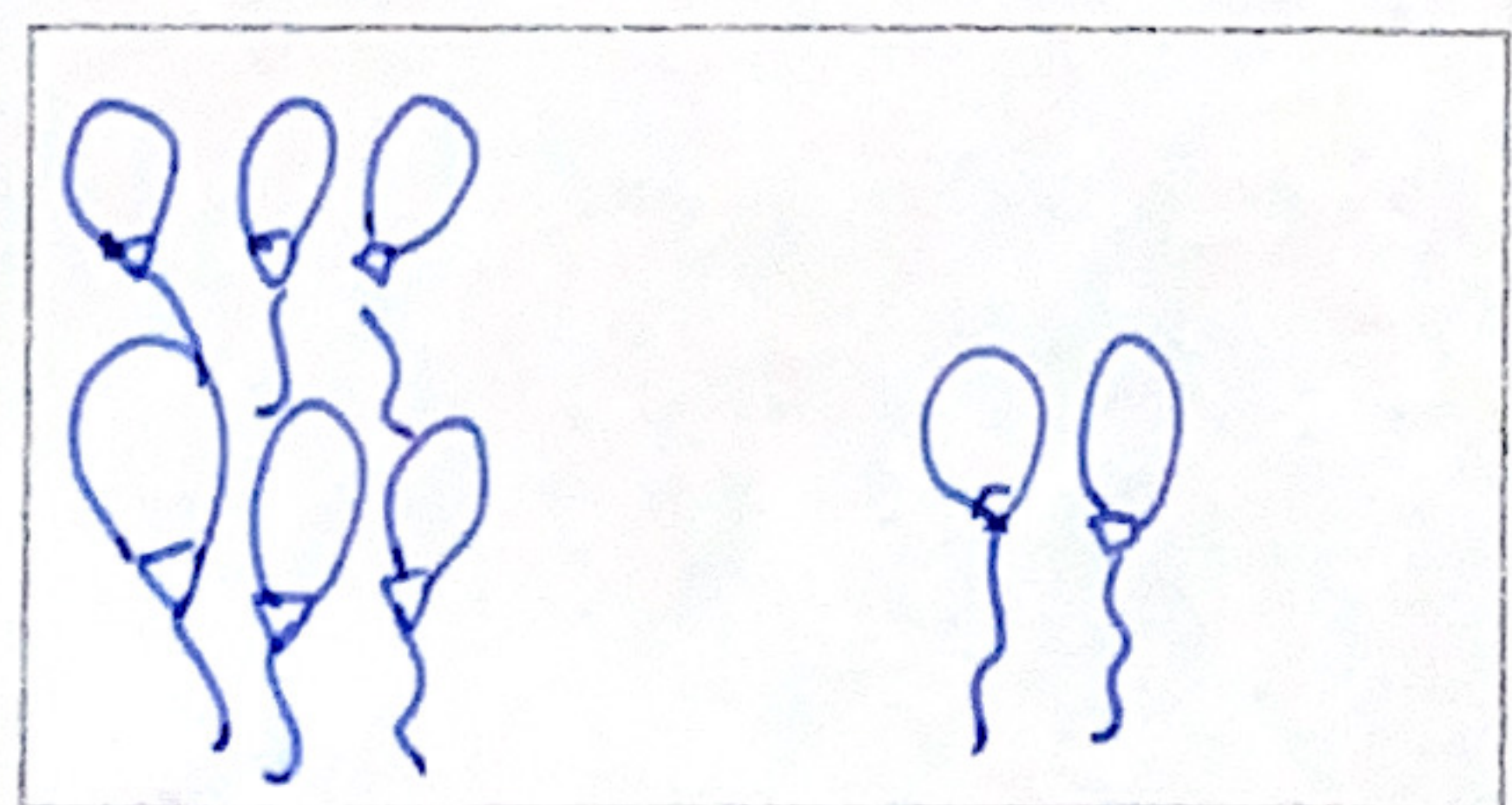
**3**  $10 - 3 = \underline{7}$



**4** Male und rechne.

$6 + 2 = \underline{8}$

$7 - 4 = \underline{3}$





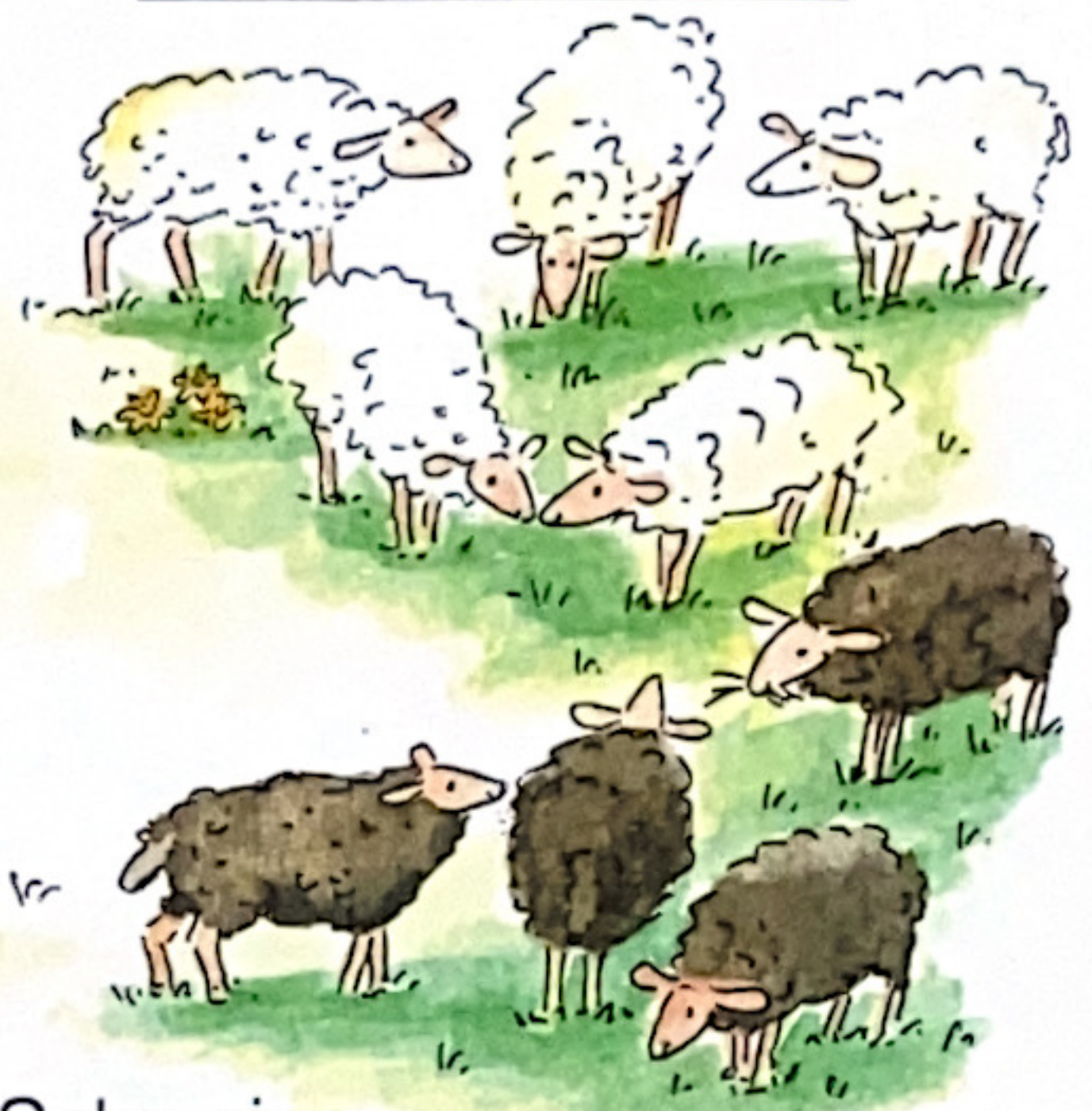
Pferde

$$3 + 3 = 6$$



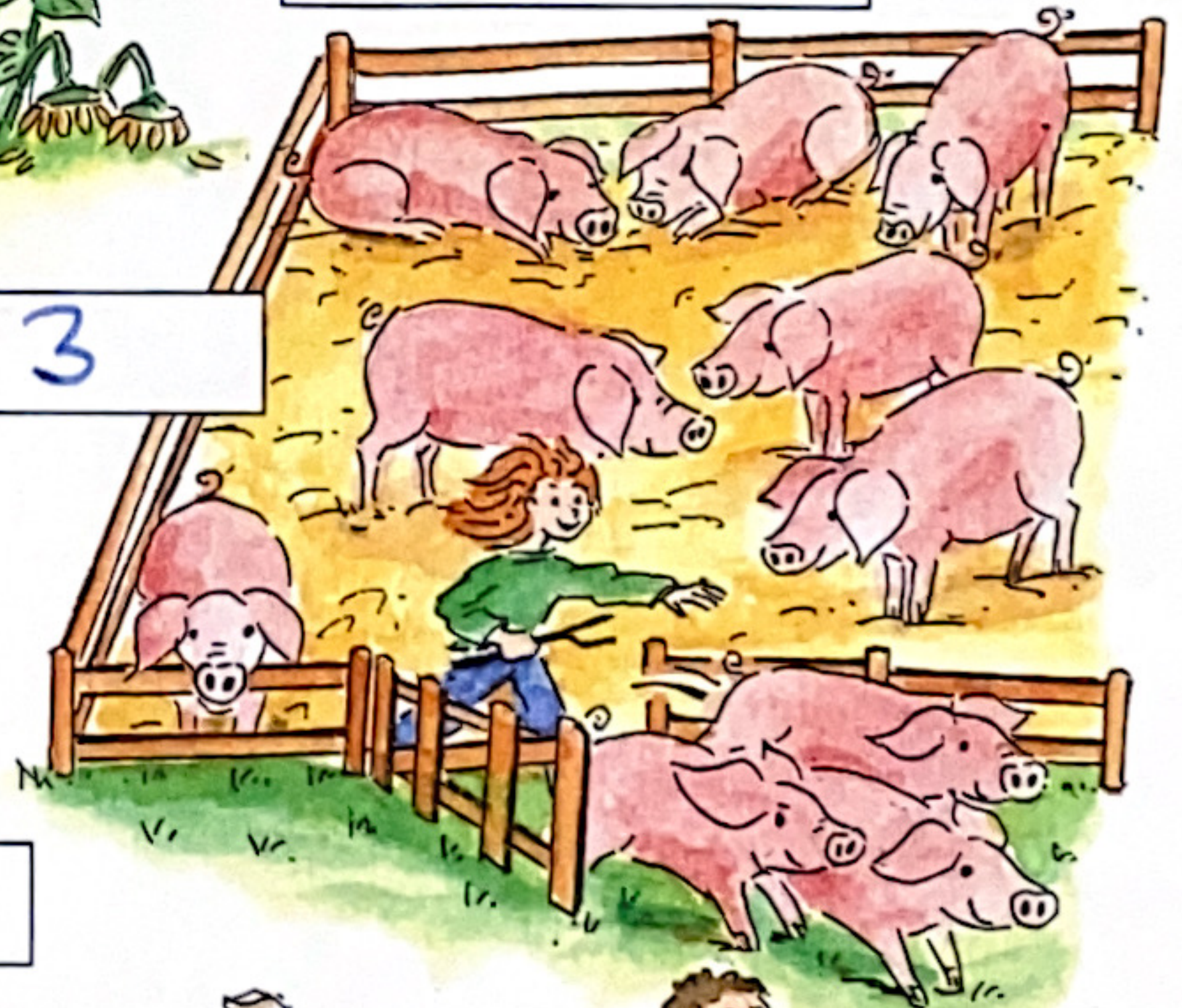
Schafe

$$5 + 4 = 9$$



Schweine

$$10 - 3 = 7$$



Blumen

$$5 - 2 = 3$$



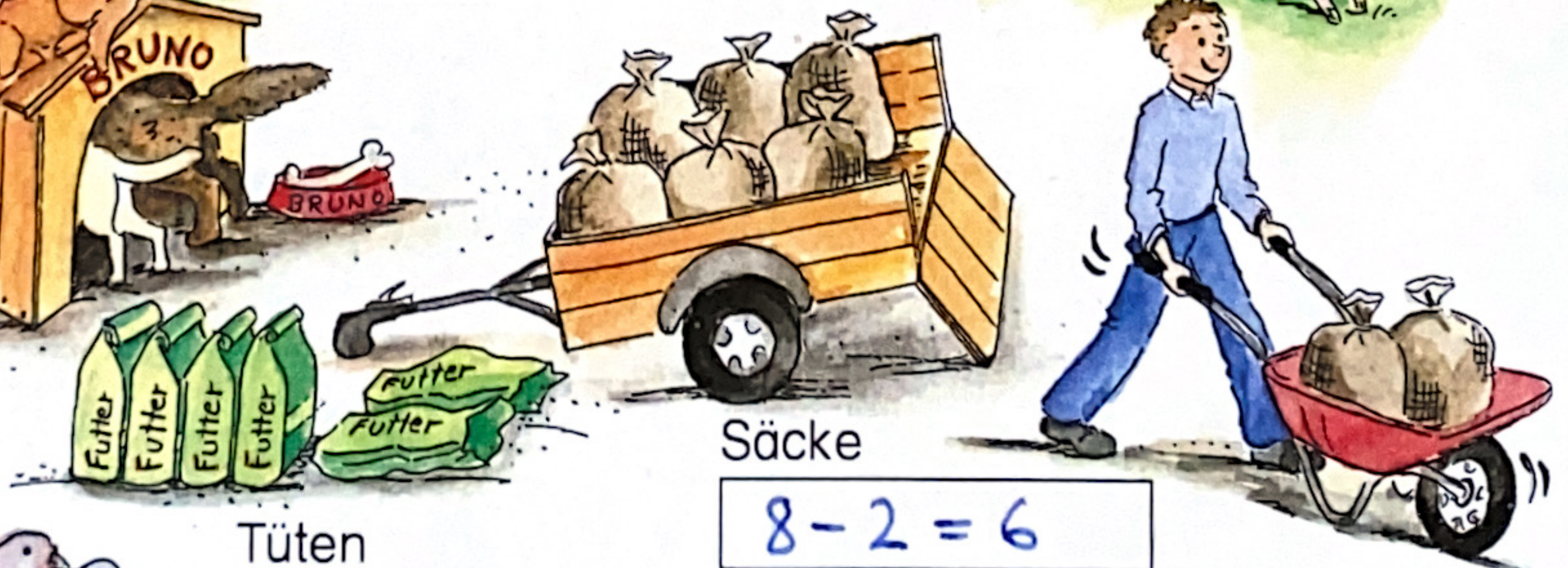
Enten

$$7 - 2 = 5$$



Hunde

$$5 - 2 = 3$$

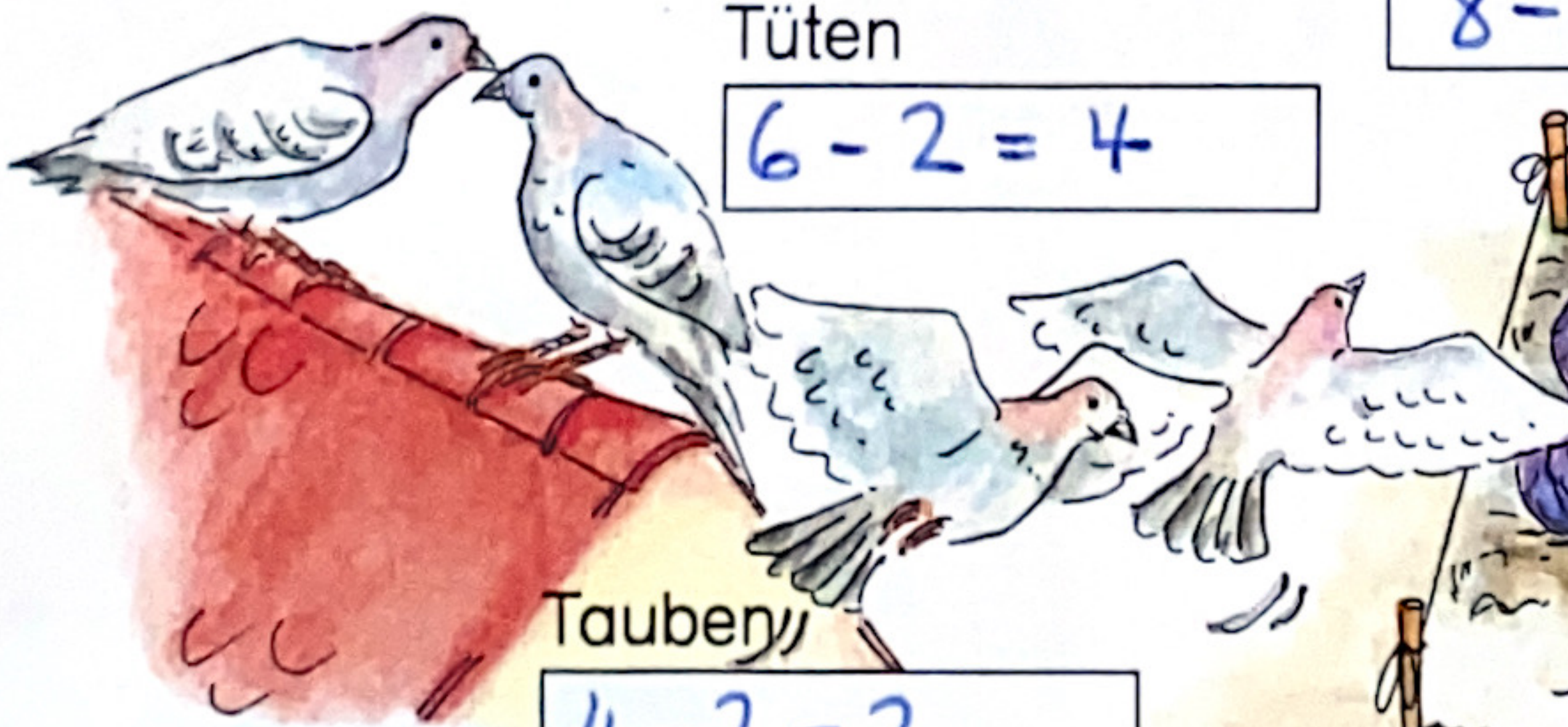


Säcke

$$8 - 2 = 6$$

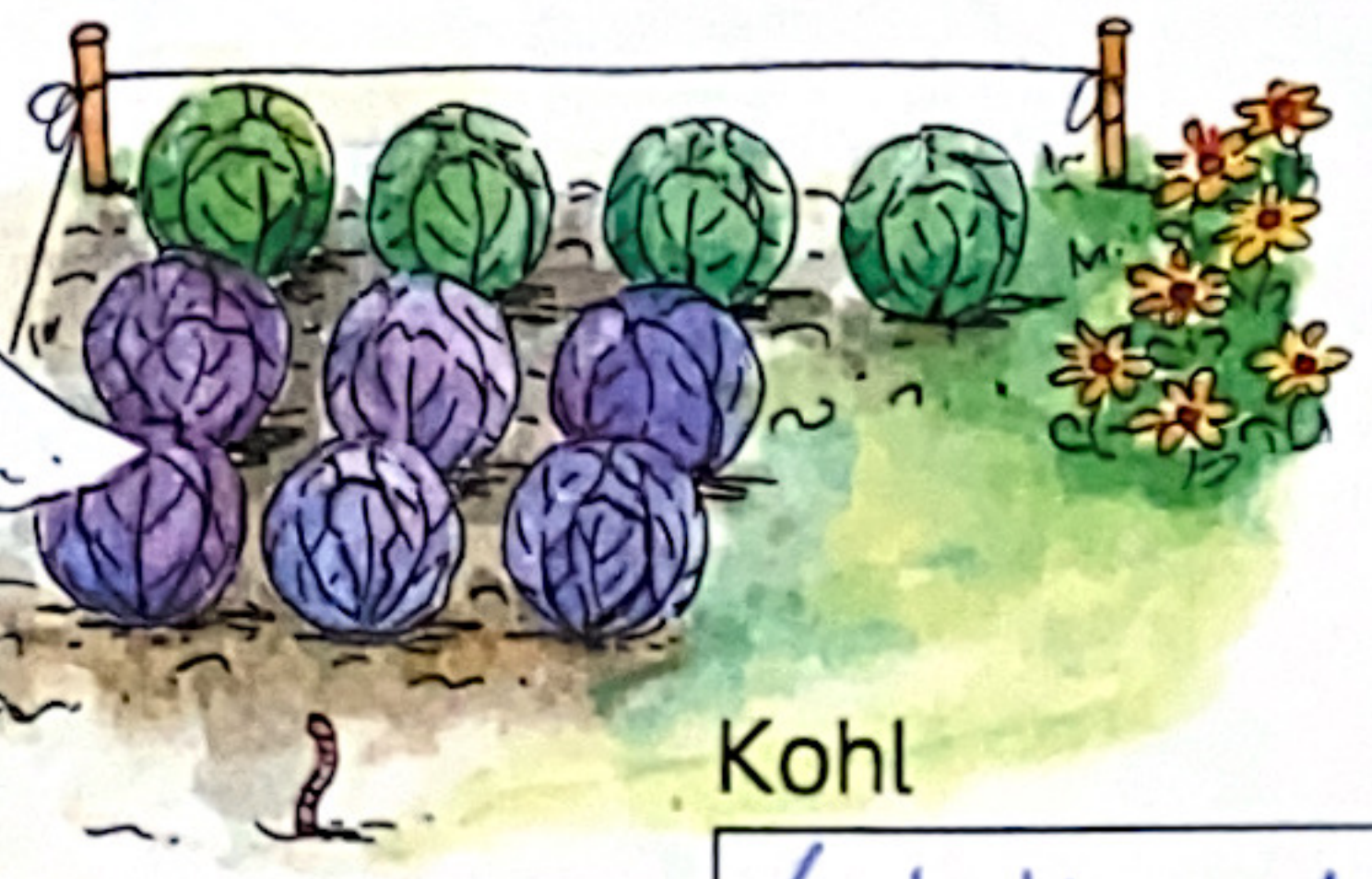
Tüten

$$6 - 2 = 4$$



Tauben

$$4 - 2 = 2$$



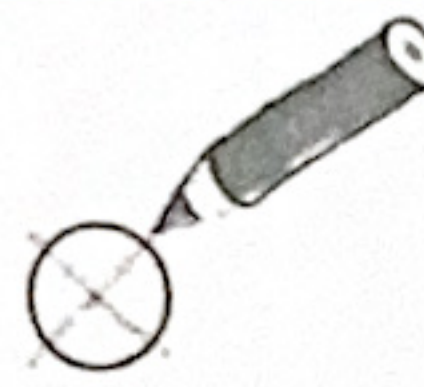
Kohl

$$6 + 4 = 10$$



# Rechengeschichten – Aufgaben zuordnen

Welches Bild passt zur Aufgabe? Kreuze an.



1



- $8 - 2 = \underline{\quad}$
- $5 - 3 = \underline{\quad}$
- $5 + 3 = \underline{8}$

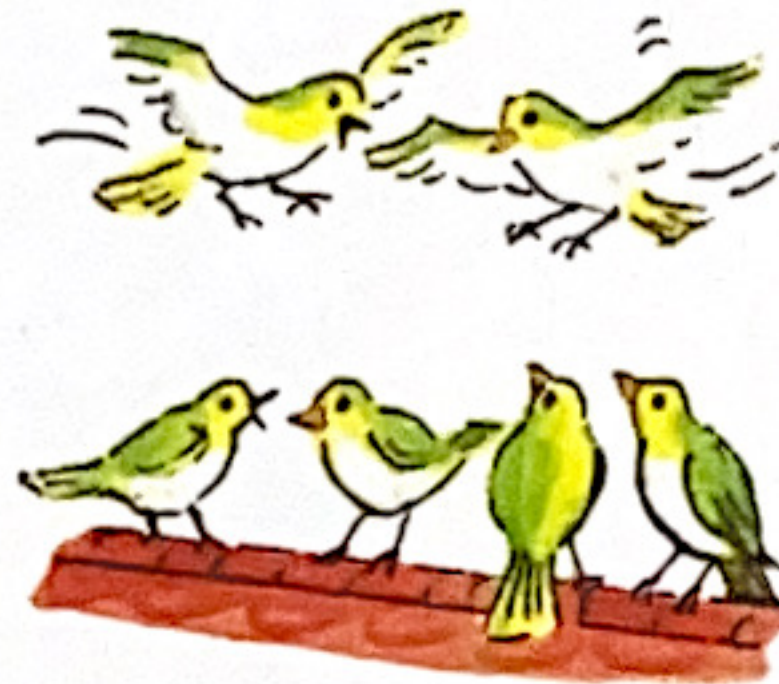


- $6 - 2 = \underline{4}$
- $6 + 2 = \underline{\quad}$
- $4 - 2 = \underline{\quad}$

2



- $4 - 4 = \underline{\quad}$
- $9 - 5 = \underline{4}$
- $5 - 4 = \underline{\quad}$



- $4 + 2 = \underline{6}$
- $2 + 5 = \underline{\quad}$
- $4 - 2 = \underline{\quad}$

3

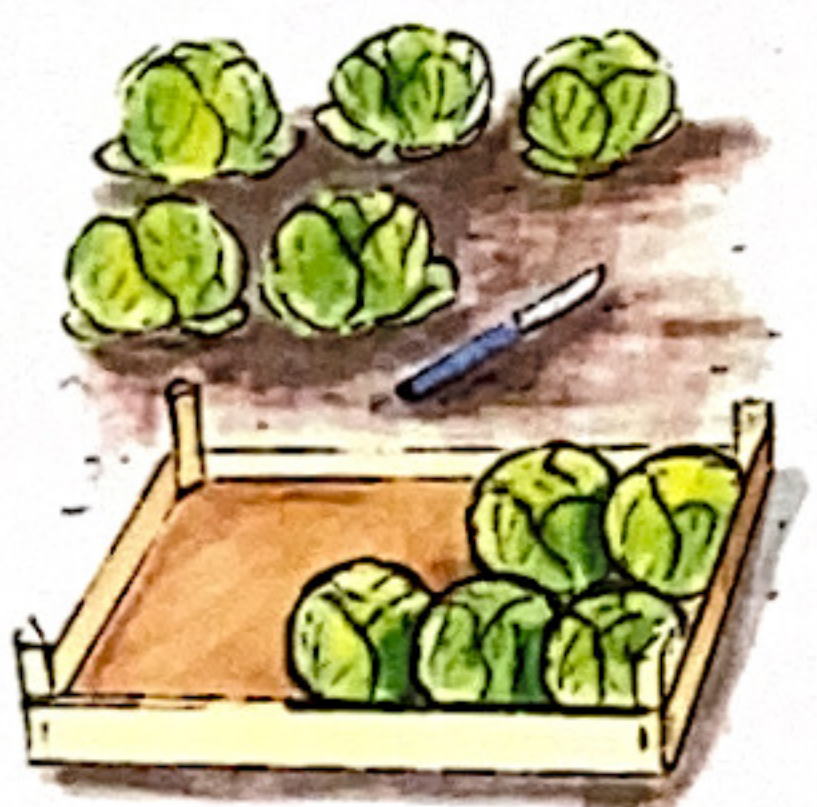


- $5 - 2 = \underline{\quad}$
- $2 + 4 = \underline{\quad}$
- $2 + 5 = \underline{7}$



- $3 - 3 = \underline{\quad}$
- $6 + 3 = \underline{\quad}$
- $6 - 3 = \underline{3}$

4



- $5 + 5 = \underline{10}$
- $10 + 5 = \underline{\quad}$
- $5 - 5 = \underline{\quad}$



- $4 - 3 = \underline{\quad}$
- $7 + 3 = \underline{\quad}$
- $7 - 4 = \underline{3}$

5



- $5 - 2 = \underline{3}$
- $3 - 2 = \underline{\quad}$
- $4 + 2 = \underline{\quad}$



- $10 + 8 = \underline{\quad}$
- $8 + 2 = \underline{10}$
- $8 - 2 = \underline{\quad}$



**1** Vergleiche. Setz ein:  $\langle$   $\equiv$   $\rangle$

$5 + 2 \langle 8$

$5 + 4 \equiv 9$

$5 + 3 \rangle 6$

$5 + 5 \langle 11$

- 2**  $5 + 0 \langle 6$   
 $5 + 1 \equiv 6$   
 $5 + 2 \rangle 6$   
 $5 + 3 \rangle 6$

- $2 + 2 \langle 8$   
 $3 + 3 \langle 8$   
 $4 + 4 \equiv 8$   
 $5 + 5 \rangle 8$

- $10 + 1 \langle 15$   
 $10 + 3 \langle 15$   
 $10 + 5 \equiv 15$   
 $10 + 7 \rangle 15$

- $19 + 0 \langle 20$   
 $18 + 2 \equiv 20$   
 $17 + 3 \equiv 20$   
 $16 + 2 \rangle 20$

- 3**  $7 - 2 \langle 4$   
 $7 - 3 \equiv 4$   
 $7 - 4 \langle 4$   
 $7 - 5 \langle 4$

- $10 - 0 \rangle 8$   
 $10 - 1 \rangle 8$   
 $10 - 2 \equiv 8$   
 $10 - 3 \langle 8$

- $18 - 2 \rangle 15$   
 $18 - 4 \langle 15$   
 $18 - 6 \langle 15$   
 $18 - 8 \langle 15$

- $19 - 3 \rangle 14$   
 $17 - 5 \langle 14$   
 $18 - 3 \rangle 14$   
 $20 - 6 \equiv 14$

**4**  $7 + 2 = 9$

$6 + 2 = 8$

$7 + 2 \rangle 6 + 2$

$12 + 2 \equiv 10 + 4$

$7 - 2 \langle 8 - 1$

$4 + 3 \equiv 5 + 2$

$13 + 1 \rangle 11 + 2$

$9 - 3 \equiv 10 - 4$

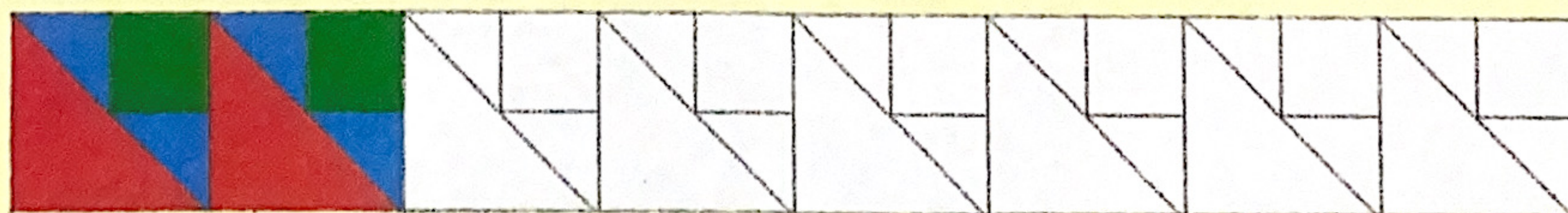
$6 + 3 \langle 5 + 5$

$15 + 3 \equiv 14 + 4$

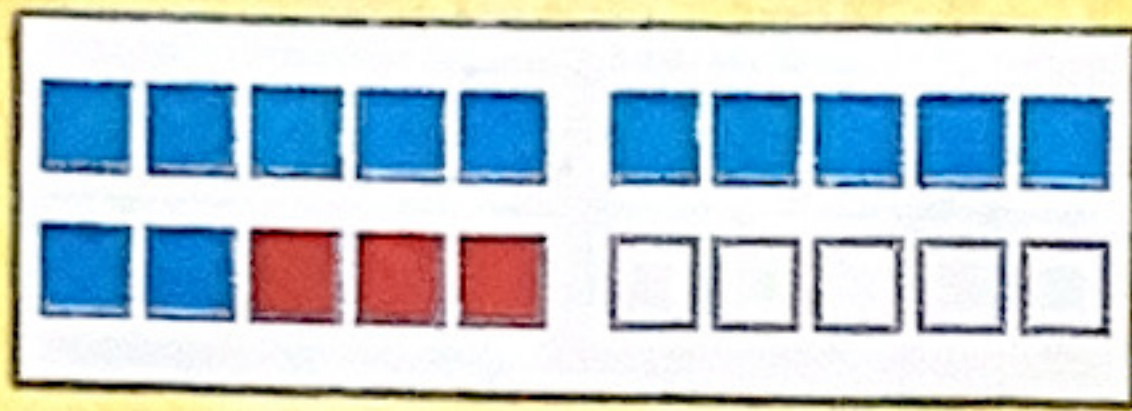
$19 - 2 \rangle 17 - 3$



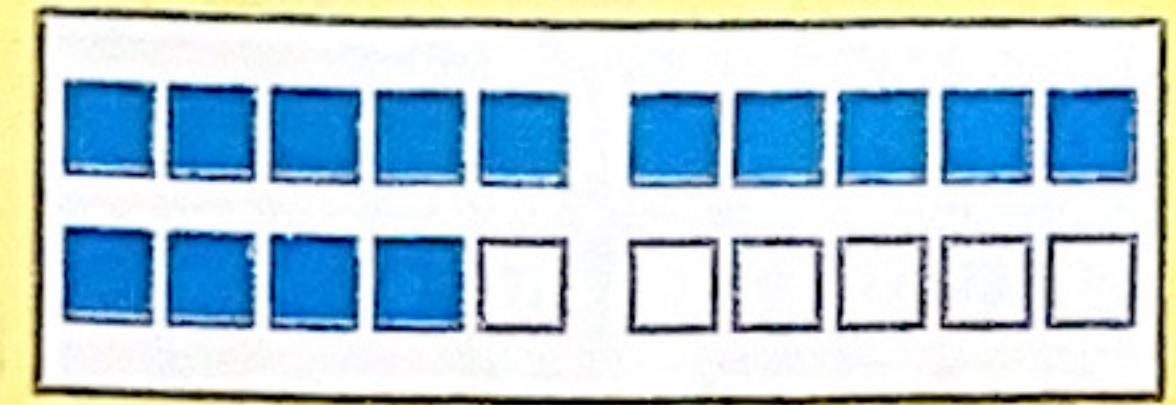
**5** Setze fort.





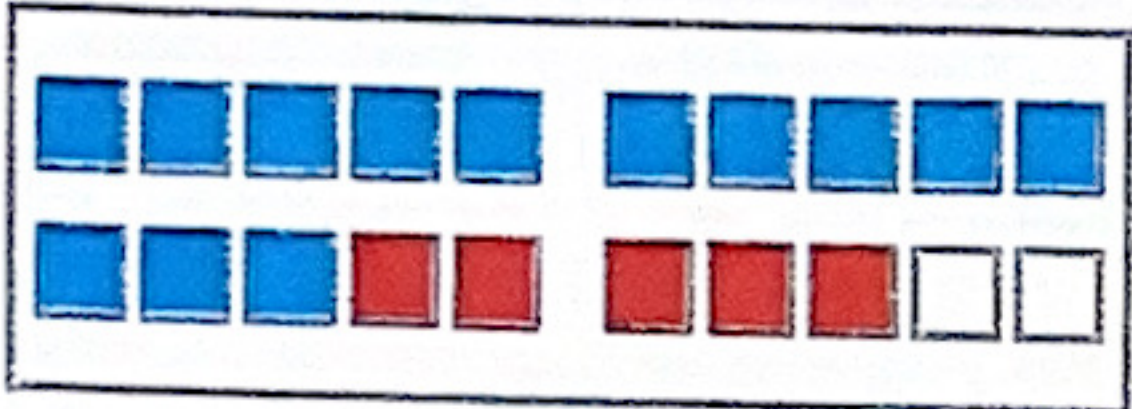


$12 + 3$

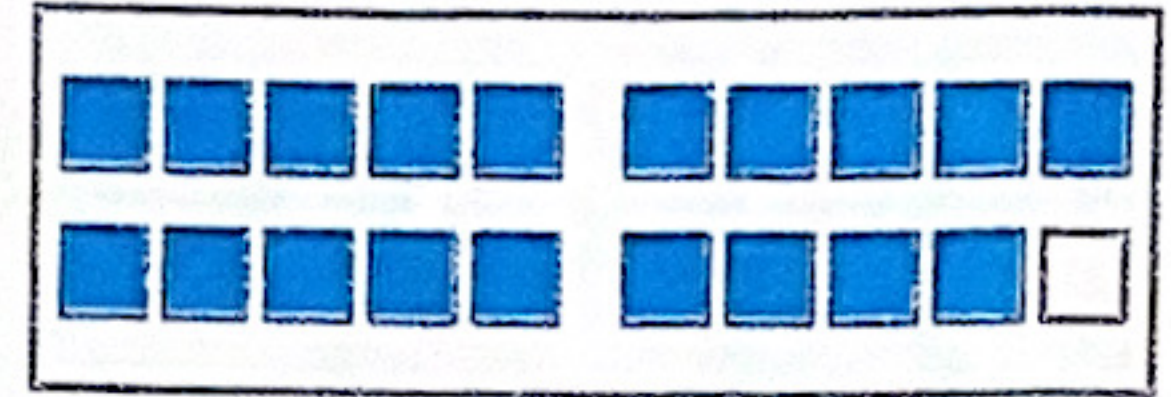
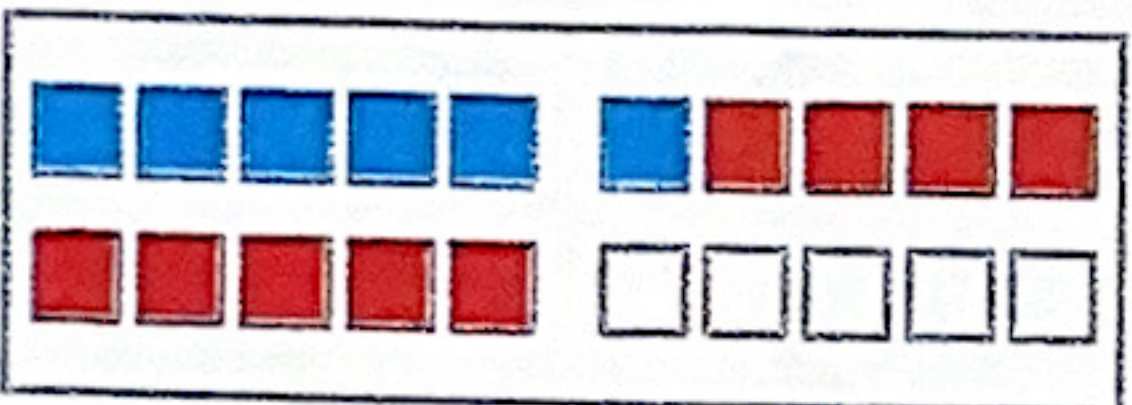
 $>$ 

 $14$ 

Vergleiche.

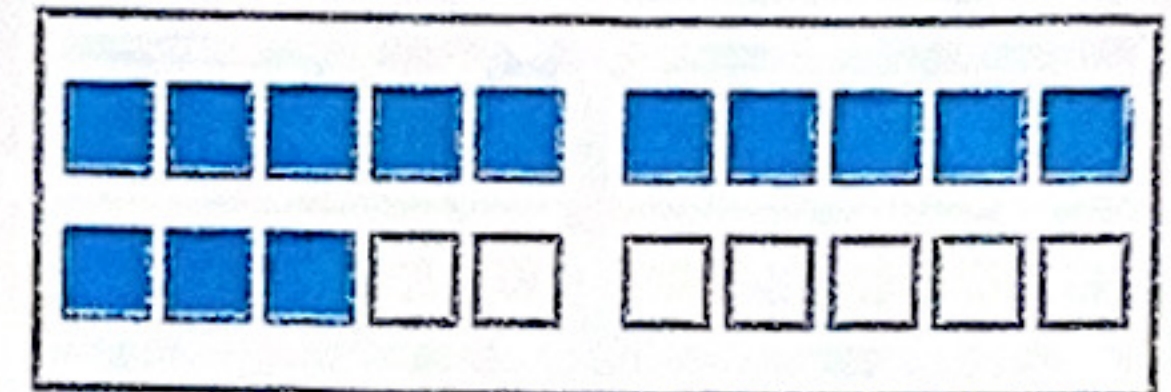
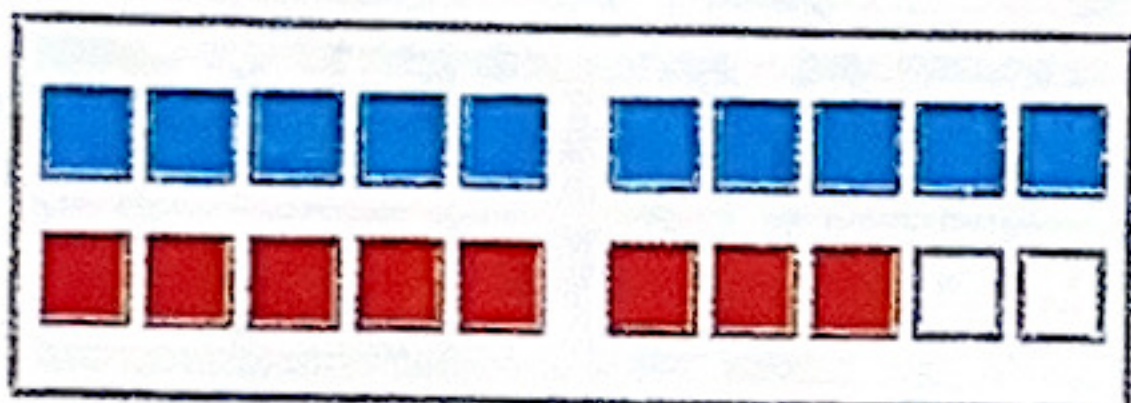
1



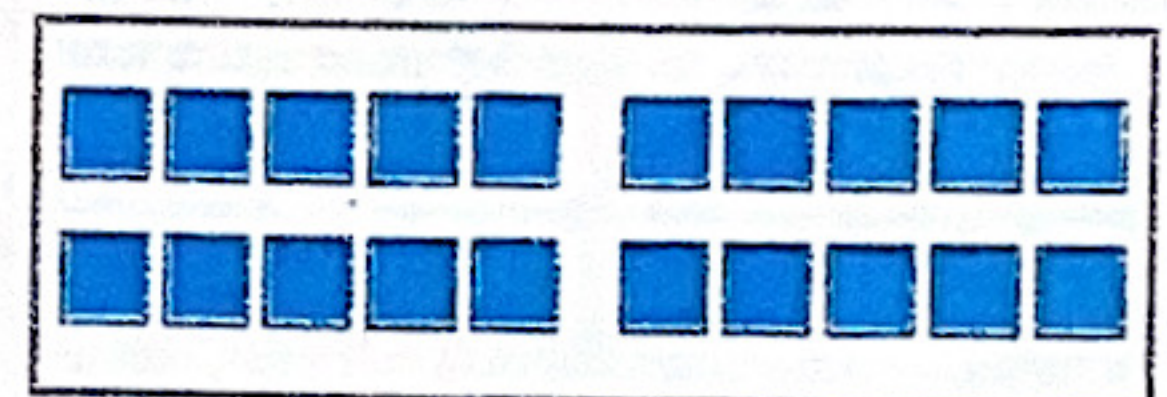
$13 + 5$

 $<$ 

 $19$ 


$6 + 9$

 $>$ 

 $13$ 


$10 + 8$

 $<$ 

 $20$ 

Setze das fehlende Zeichen ein.

2

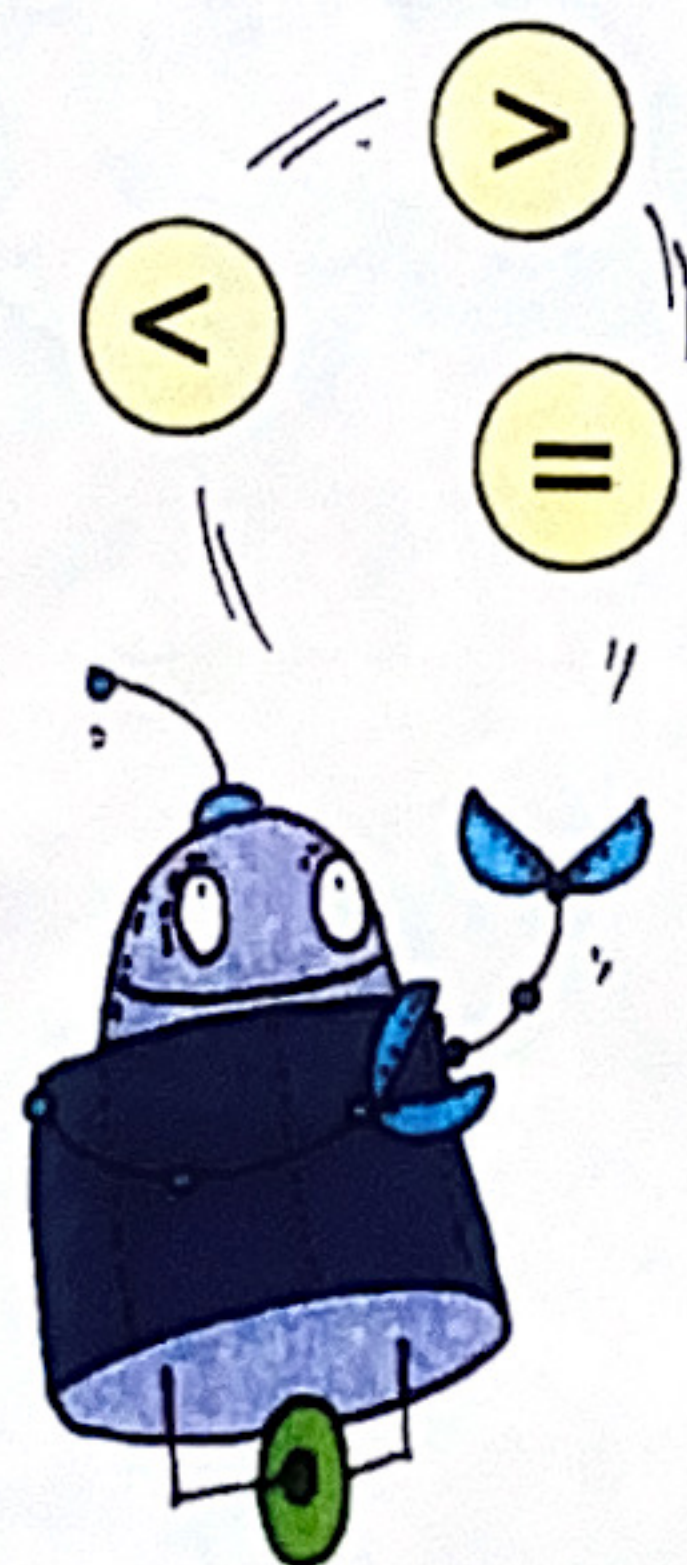
$2 + 9 < 13$

$11 + 7 < 19$

$13 + 2 = 15$

$8 + 9 < 18$

$14 + 4 = 18$



$14 + 6 = 20$

$11 + 9 = 20$

$13 + 4 > 16$

$9 + 3 = 12$

$9 + 8 > 16$



Welche Zahlen passen?

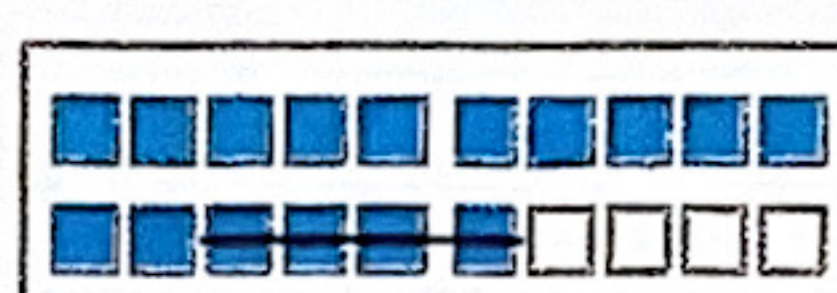
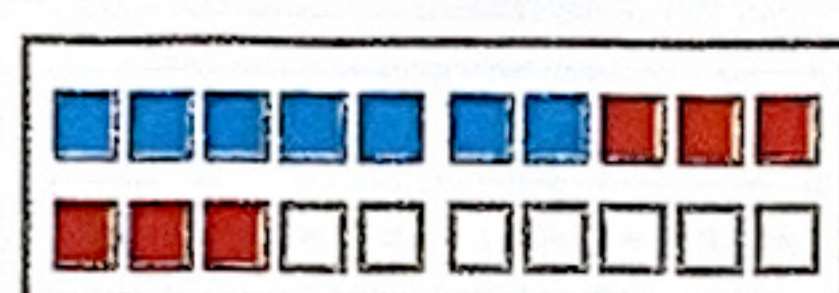
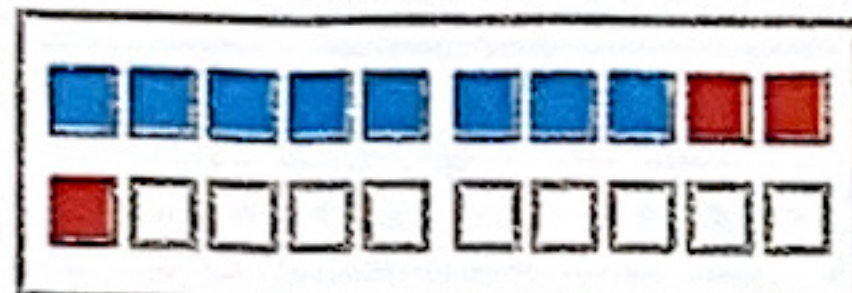
$$12 + 5 > \textcircled{11} \quad 18 \quad 20 \quad \textcircled{16} \quad 19 \quad \textcircled{10}$$

$$17 - 4 < \textcircled{18} \quad 7 \quad 11 \quad \textcircled{19} \quad \textcircled{14} \quad \textcircled{16}$$

$$3 - 2 < \textcircled{14} \quad \textcircled{16} \quad \textcircled{19} \quad \textcircled{12} \quad \textcircled{18} \quad \textcircled{20}$$

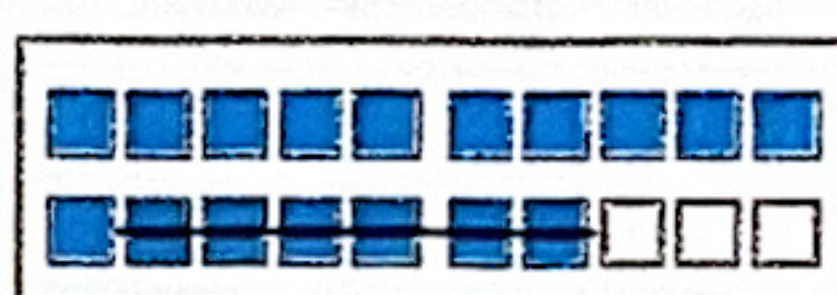
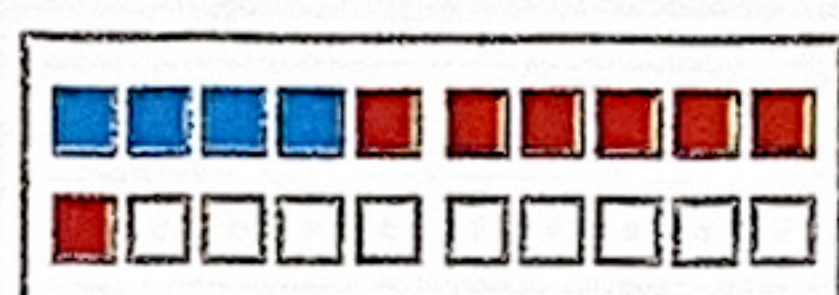
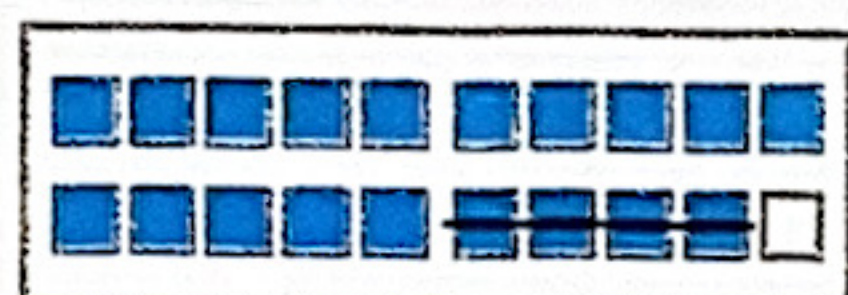
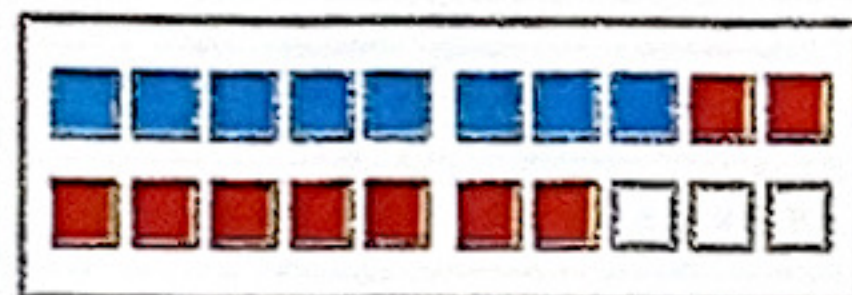
$$14 + 4 < 2 \quad \textcircled{20} \quad 14 \quad 13 \quad 18 \quad 9$$

Bilde Aufgaben und vergleiche.



$$8 + 3 < 15 - 3$$

$$7 + 6 > 16 - 4$$



$$8 + 9 > 19 - 4$$

$$4 + 7 = 17 - 6$$

Setze das fehlende Zeichen ein.

$$17 + 3 > 18 - 4$$

$$12 + 5 > 19 - 7$$

Erst rechne ich im Kopf.

$$8 + 9 > 20 - 6$$

$$16 + 2 = 20 - 2$$

$$11 + 3 = 18 - 4$$

$$9 + 8 > 19 - 4$$



Finde passende Zahlen.

$$17 + 1 > 20 - 6$$

$$10 + 9 > 15 - 1$$

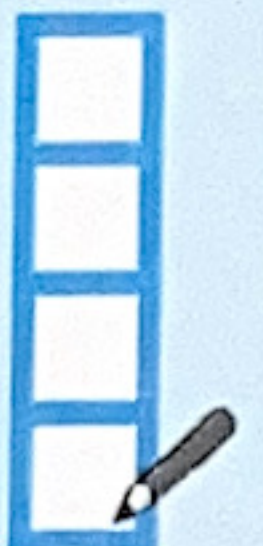
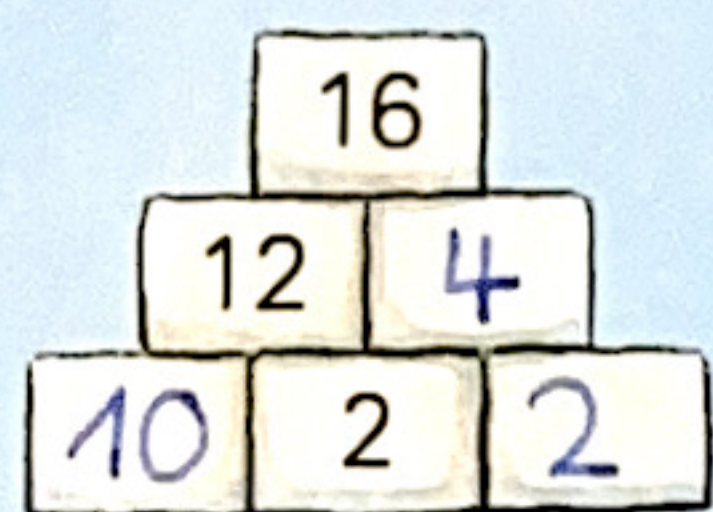
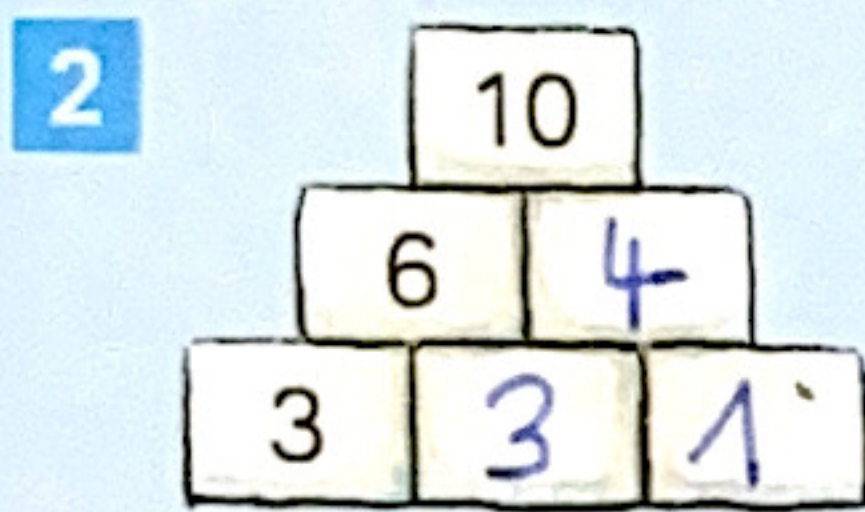
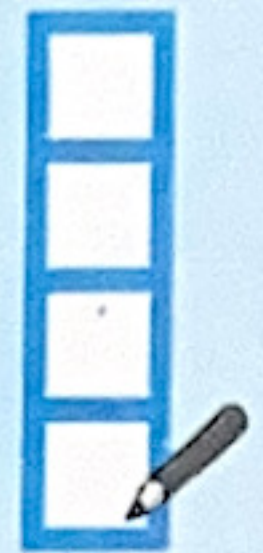
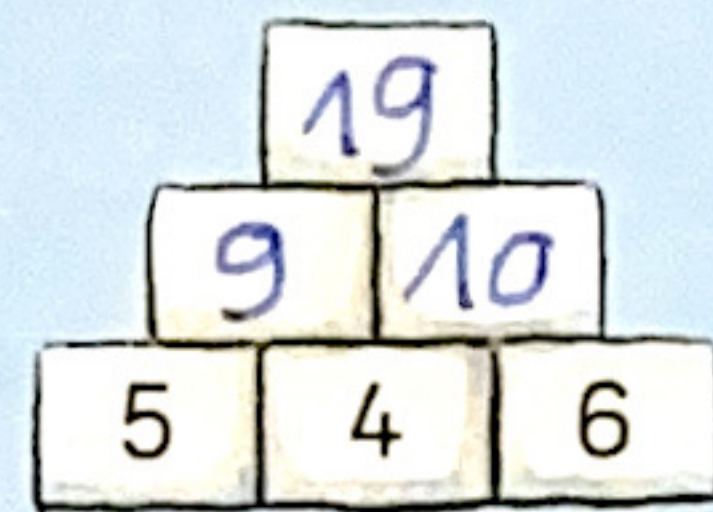
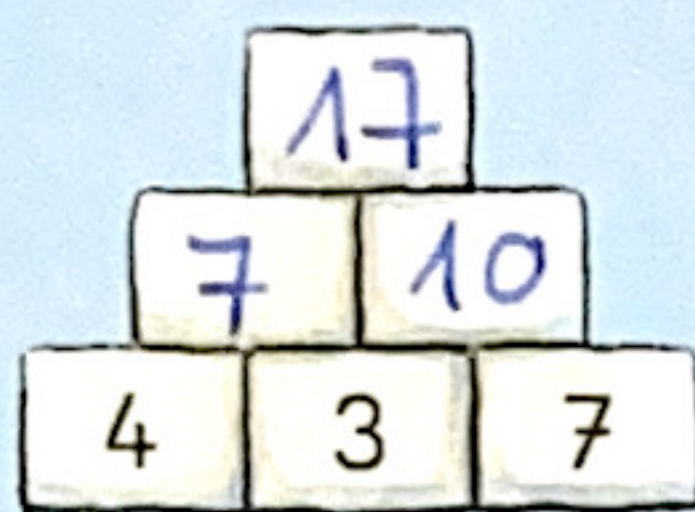
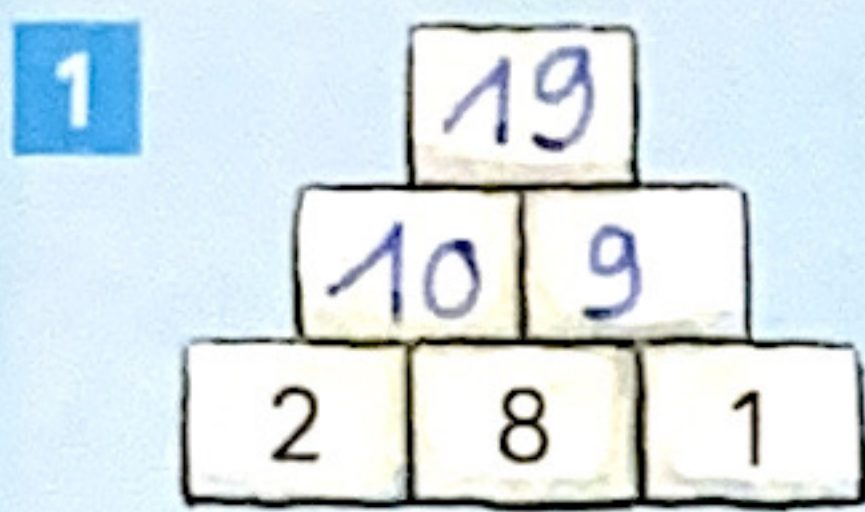
$$7 + 3 = 18 - 8$$

$$12 - 12 = 3 - 3$$

$$14 - 1 > 9 + 1$$

$$18 - 0 > 1 + 16$$





3 Rechne auf deinem Weg.

$8 + 4 = 12$

$5 + 5 = 10$

$7 + 7 = 14$

$9 + 3 = 12$

$5 + 9 = 14$

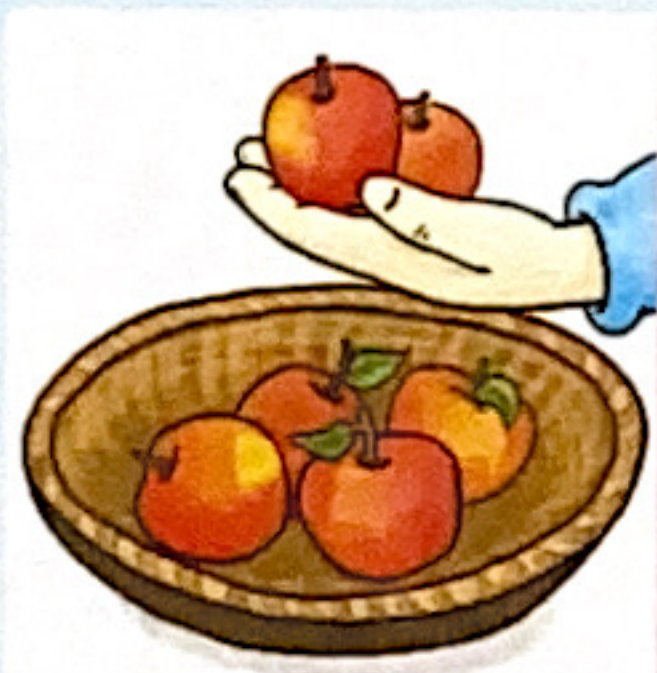
$8 + 6 = 14$

$7 + 8 = 15$

$4 + 9 = 13$



4 Welche Aufgabe passt zum Bild? Kreuze an.



$6 + 2 = \underline{\quad}$

$4 - 2 = \underline{\quad}$

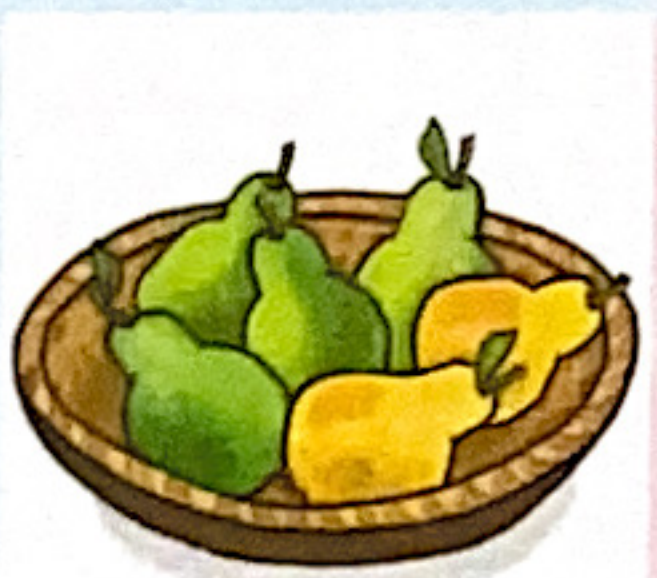
$6 - 2 = \underline{4}$



$8 - 3 = \underline{5}$

$3 + 6 = \underline{\quad}$

$8 + 3 = \underline{\quad}$



$6 + 2 = \underline{\quad}$

$4 + 2 = \underline{6}$

$6 - 2 = \underline{\quad}$



$5 - 4 = \underline{\quad}$

$9 + 5 = \underline{\quad}$

$5 + 4 = \underline{9}$



5 Setze ein:

$5 + 3 > 7$

$6 - 3 < 4$

$8 - 2 = 6$

$5 + 5 > 7$

$6 - 1 > 4$

$8 - 5 < 6$

$5 + 2 = 7$

$6 - 5 < 4$

$8 - 1 > 6$



Zuerst Aufgaben lösen, dann selbst einschätzen.